

1	Hydraulics	3-284
2	Hydraulic Quick Release Couplings	285-320
3	Pneumatic Quick Release Couplings	321-406
4	Monitor & Test	407-446
5	Pneumatic & Vacuum	447-762
6	Push-in Fittings & Tubing	763-918
7	Valves & Actuation	919-1060
8	Ring Main	1061-1136
9	Hose Tails, Adaptors, Fittings & Manifolds	1137-1224
10	Stainless Steel	1225-1332
11	Malleable Iron	1333-1398
12	Hose, Couplings, Ducting & Hose Reels	1399-1510
13	Clips & Clamps	1511-1558
14	Paint, Sprays & Adhesives	1559-1590
15	Blow Guns, Vacuum & Nozzles	1591-1616
16	Fuelling, Lubrication, Wash Down & Misting	1617-1696
17	Compressors & Air Tools	1697-1726
18	Hand Tools & PPE	1727-1765

SECTION 3

3

Pneumatic Quick Release Couplings

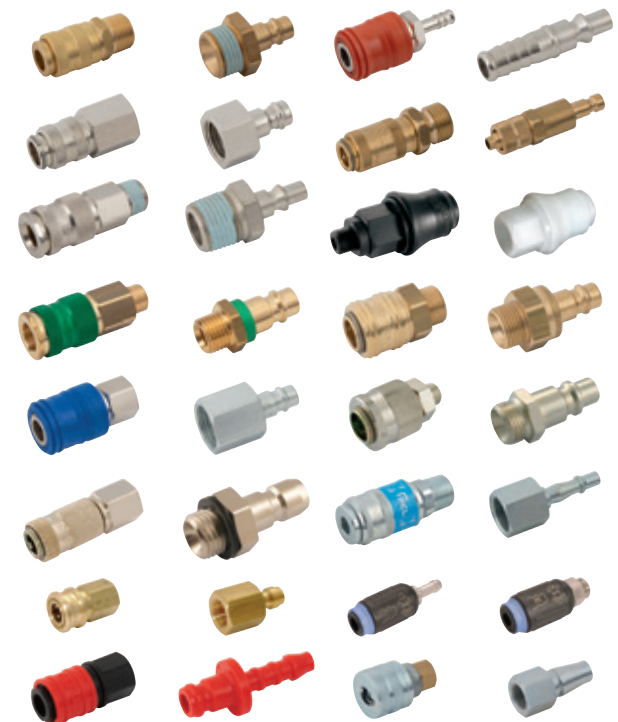
3	Pneumatic Quick Release Couplings	324-406
----------	--	----------------

3.00 Pneumatic Quick Release Couplings

- Mini Couplings & Plugs
- High Flow Couplings & Plugs
- Heavy-duty Couplings & Plugs
- Twist Air Couplings & Plugs
- Small Couplings & Plugs
- Japanese Profile Couplings & Plugs
- Aro Profile Couplings & Plugs
- Self Venting Couplings & Plugs
- English Profile Couplings & Plugs
- ISO 6150 'C' Profile Couplings & Plugs
- English Industrial Profile Couplings & Plugs
- International Profile Couplings & Plugs
- Worldwide Profile Couplings & Plugs
- Safety Locking Couplings & Plugs
- Colour Coded Couplings & Plugs
- Thermoplastic Couplings & Plugs
- Industrial Interchange High Flow Couplings & Plugs
- ISO 6150 B Couplings & Plugs
- European Profile Couplings & Plugs
- Self Venting Couplings & Plugs
- Stainless Steel Couplings & Plugs
- Parker Profile Couplings & Plugs
- Atlas Copco Profile Couplings & Plugs
- Low Pressure Fluid & Pneumatic Couplings & Plugs
- German Industrial Profile Couplings & Plugs
- Breathing Air Couplings & Plugs
- Schrader Couplings & Plugs
- Scandinavian Profile Couplings & Plugs
- Moldtite Couplings & Plugs
- Plastic Injection Moulding Couplings
- Acetal Resin Couplings & Plugs
- Air Line Couplings & Plugs
- Instantair Couplings & Plugs
- Swing Couplings & Hose Tails
- Straight-Through Couplings & Plugs
- Air Brake Components



324-406



KEEP ON CONNECTING

Your Partner for Air & Other Fluids
Low Pressure Solutions

 legris

 RECTUS



Manufactured in Europe

 Parker

ENGINEERING YOUR SUCCESS.

Plug Profile	Standard-Series	Self-Venting Series
Plug Profile: ISO 6150 B	23SF 23KA/24KA 1400KA/1423KA 24KE/1400KE	30SF 30KA 37SF 37KA
Plug Profile: ISOC	303SB 303KB	18SF 18KA 84SF 84KA
Plug Profile: Europe	20SF 20KA 21SF 21KA	25SF*/26SF** 25KA/26KA/1600KA 1625KA 26KE/1600KE 27SF 27KA/1700KA 1727KA 1700KE
Plug Profile: Walther	50SF 50KA 51SF 51KA	52SF 52KA 57SF 57KA
Plug Profile: Scandinavia	1100SF 1100KA 1300SF 1300KA	1800SF 1800KA 1900SF 1900KA 2100SF 2100KA
Plug Profile: Asia	13SF 13KA	33SF 33KA 34SF 34KA
Plug Profile: Aro	22SF 14KA/22KA 14KE	17SF 17KA 19SF 19KA

* Steel zinc plated
** Brass

Pictures are smaller than actual products.

BE-17 Couplings



Male Thread, BSPT

0531	Thread
B1704M	1/4"
B1706M	3/8"
B1708M	1/2"



Female Thread, BSPP

0531	Thread
B1704F	1/4"
B1706F	3/8"
B1708F	1/2"



Hose Tail

0531	Thread
B1704H	1/4" (6mm)
B1705H	5/16" (8mm)
B1706H	3/8" (10mm)
B1708H	1/2" (12mm)

BE-17 Plugs



Male Thread, BSPT

0531	Thread
B1702MP	1/8"
B1704MP	1/4"
B1706MP	3/8"
B1708MP	1/2"



Female Thread, BSPP

0531	Thread
B1702FP	1/8"
B1704FP	1/4"
B1706FP	3/8"



BE-17 Plugs, Hose Tail

0531	To Suit Hose ID
B1704HP	1/4" (6mm)
B1705HP	5/16" (8mm)
B1706HP	3/8" (10mm)
B1708HP	1/2" (12mm)

BE-19 Couplings



Male Thread, BSPT

0532	Thread
B1904M	1/4"
B1906M	3/8"
B1908M	1/2"



Female Thread, BSPP

0532	Thread
B1904F	1/4"
B1906F	3/8"
B1908F	1/2"



Hose Tail

0532	To Suit Hose ID
B1904H	1/4" (6mm)
B1905H	5/16" (8mm)
B1906H	3/8" (10mm)
B1908H	1/2" (12mm)

BE-19 Plugs



Male Thread, BSPT

0532	Thread
B1902MP	1/8"
B1904MP	1/4"
B1906MP	3/8"
B1908MP	1/2"



Female Thread, BSPP

0532	Thread
B1904FP	1/4"
B1906FP	3/8"
B1908FP	1/2"



Hose Tail

0532	To Suit Hose ID
B1904HP	1/4"
B1905HP	5/16"
B1906HP	3/8"
B1908HP	1/2"

BE RANGES



BE-21 Mini Couplings



Male Thread, BSPT

0533	Thread
B2102M	1/8"
B2104M	1/4"



Panel Mounting, Male Thread, BSPP

0533	Thread
B2102BH	1/8"
B2104BH	1/4"



Female Thread, BSPP

0533	Thread
B2102F	1/8"
B2104F	1/4"



Quick Fit Tube

0533	To Suit Tube mm
B2106Q	6 x 4
B2108Q	8 x 6



Quick Fit Panel Mounting

0533	To Suit Tube mm
B2106QBH	6 x 4
B2108QBH	8 x 6

BE-21 Mini Couplings, Hose Tail



0533	To Suit Hose ID
B2104H	6mm
B2105H	9mm
B2106H	3/8" (10mm)

BE-21 Mini Plugs



Male Thread, BSPP

0533	Thread
B2102MP	1/8"
B2104MP	1/4"



Female Thread, BSPP

0533	Thread
B2102FP	1/8"
B2104FP	1/4"



Quick Fit

0533	To Suit Tube mm
B2106QP	6 x 4
B2108QP	8 x 6



Hose Tail

0533	To Suit Hose ID
B2103HP	3/16" (5mm)
B2104HP	6mm
B2105HP	9mm

BE-23 ISO Couplings



Male Thread, BSPT

0534	Thread
B2304M	1/4"
B2306M	3/8"
B2308M	1/2"



Female Thread, BSPP

0534	Thread
B2304F	1/4"
B2306F	3/8"
B2308F	1/2"



Hose Tail

0534	To Suit Hose ID
B2305H	5/16"
B2306H	3/8"

BE-23 ISO Plugs



Male Thread, BSPT

0534	Thread
B2304MP	1/4"



Female Thread, BSPP

0534	Thread
B2304FP	1/4"
B2306FP	3/8"



Hose Tail

0534	To Suit Hose ID
B2304HP	1/4"
B2306HP	3/8"
B2308HP	1/2"



Safety, Male Thread, BSPT

0534	Thread
B2304MPS	1/4"

BE-25B Brass Couplings



Male Thread, BSPT

0535	Thread
B25B04M	1/4"
B25B06M	3/8"
B25B08M	1/2"



Female Thread, BSPP

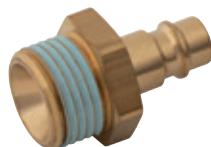
0535	Thread
B25B04F	1/4"
B25B06F	3/8"
B25B08F	1/2"



Hose Tail

0535	To Suit Hose ID
B25B05H	5/16" (8mm)
B25B06H	3/8" (10mm)
B25B08H	1/2" (13mm)

BE-25B Brass Plugs



Male Thread, BSPT

0535	Thread
B25B04MP	1/4"
B25B06MP	3/8"
B25B08MP	1/2"



Hose Tail

0535	To Suit Hose ID
B25B04HP	1/4" (6mm)
B25B05HP	5/16" (8mm)
B25B06HP	3/8" (10mm)
B25B08HP	1/2" (12mm)

BE-25 Couplings



Male Thread, BSPT

0535	Thread
B2504M	1/4"
B2506M	3/8"
B2508M	1/2"



Female Thread, BSPP

0535	Thread
B2504F	1/4"
B2506F	3/8"
B2508F	1/2"



Hose Tail

0535	To Suit Hose ID
B2504H	1/4" (6mm)
B2505H	5/16" (8mm)
B2506H	3/8" (10mm)
B2508H	1/2" (12mm)

BE-25 Plugs



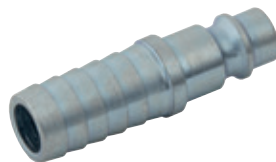
Male Thread, BSPT

0535	Thread
B2502MP	1/8"
B2504MP	1/4"
B2506MP	3/8"
B2508MP	1/2"



Female Thread, BSPP

0535	Thread
B2502FP	1/8"
B2504FP	1/4"
B2506FP	3/8"
B2508FP	1/2"



Hose Tail

0535	To Suit Hose ID
B2504HP	1/4" (6mm)
B2505HP	5/16" (8mm)
B2506HP	3/8" (10mm)
B2508HP	1/2" (12mm)



Safety, Male Thread, BSPT

0535	Thread
B2506MPS	3/8"

BE RANGES



BE-27 High Flow Couplings



Male Thread, BSPT

0536	Thread
B2708M	1/2"



Female Thread, BSPP

0536	Thread
B2706F	3/8"
B2708F	1/2"



Hose Tail

0536	To Suit Hose ID
B2706H	3/8"
B2708H	1/2"

BE-27 High Flow Plugs



Male Thread, BSPT

0536	Thread
B2704MP	1/4"
B2708MP	1/2"



Female Thread, BSPP

0536	Thread
B2708FP	1/2"



Hose Tail

0536	To Suit Hose ID
B2706HP	3/8"
B2710HP	5/8"

BE-68 Heavy-duty Couplings



Male Thread, BSPP

0538	Thread
B6808M	1/2"
B6812M	3/4"



Female Thread, BSPP

0538	Thread
B6804F	1/4"
B6808F	1/2"
B6812F	3/4"



Hose Tail

0538	To Suit Hose ID
B6806H	3/8" (10mm)
B6808H	1/2" (12mm)
B6812H	3/4" (19mm)

BE-68 Heavy-duty Plugs



Male Thread, BSPT

0538	Thread
B6804MP	1/4"
B6806MP	3/8"
B6808MP	1/2"
B6812MP	3/4"



Female Thread, BSPP

0538	Thread
B6804FP	1/4"
B6806FP	3/8"
B6808FP	1/2"



Hose Tail

0538	To Suit Hose ID
B6806HP	3/8" (10mm)
B6808HP	1/2" (12mm)

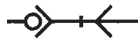
TWIST-AIR COUPLINGS



Working Temperature:
-15°C to +80°C
Standard seal NBR



Maximum Static Working Pressure
Static and random rotation:
PB 17 bar (250 psi)



Single Shut Off

Triple Outlet Connector



3 x Coupling Outlets, 1 x 1/4" BSPP Inlet

9000
M3-TA

Under continuous rotation:
PB 10 bar (145 psi)
Interchangeability:
Twist air PCL series
Flow rate: 900 L/min
Material: Mild steel zinc plated
Application:
General purpose pneumatic twist coupling.



Profile

Twist-Air Socket Halves



Male Thread, BSPP

9000	Old Ref	Thread	Length mm
TAC14M	PT8825	1/4"	58
TAC38M	PT8827	3/8"	54



Female Thread, BSPP

9000	Old Ref	Thread	Length mm
TAC14F	PT8823	1/4"	55
TAC38F	PT8800	3/8"	58



Hose Tail

9000	Old Ref.	To Suit Hose ID	Length mm
TAC14HT	PT8800/SU4	1/4"	91
TAC516HT	PT8800/SU5	5/16"	94
TAC38HT	PT8800/SU6	3/8"	96

Twist-Air Plug Halves - Swivel



Male Thread, BSPP

9000	Old Ref	Thread	Length mm
TAPS14M	PT8836	1/4"	46
TAPS38M	PT8838	3/8"	50



Female Thread, BSPP

9000	Old Ref	Thread	Length mm
TAPS14F	PT8834	1/4"	50
TAPS38F	PT8804	3/8"	51



Hose Tail

9000	Old Ref.	To Suit Hose ID	Length mm
TAPS14HT	PT8804/SU4	1/4"	85
TAPS516HT	PT8804/SU5	5/16"	88
TAPS38HT	PT8804/SU6	3/8"	90

Twist-Air Plug Halves - Non-swivel



Male Thread, BSPP

9000	Old Ref	Thread	Length mm
TAP14M	PT8808	1/4"	42
TAP38M	PT8817	3/8"	41



Female Thread, BSPP

9000	Old Ref	Thread	Length mm
TAP14F	PT8806	1/4"	41
TAP38F	PT8802	3/8"	44



Hose Tail

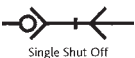
9000	Old Ref.	To Suit Hose ID	Length mm
TAP14HT	PT8802/SU4	1/4"	77
TAP516HT	PT8802/SU5	5/16"	81
TAP38HT	PT8802/SU6	3/8"	83

SERIES 02 SMALL QUICK COUPLINGS



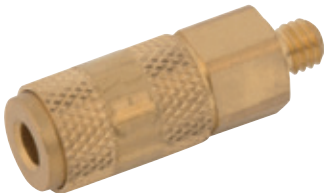
Working Temperature:
-20°C to +100°C
Standard seal NBR

Maximum Static Working Pressure:
PB 35 bar (500 psi)



Profile

Couplings



Male Thread, Metric

2010	Thread	Hex Size mm	Length mm
02KAAM03MPX	M3	6	19
Tech Sheet 10276			



Hose Tail

2010	To Suit Hose ID mm	Hex Size mm	Length mm
02KATF02MPX	2	6	21
Tech Sheet 10276			

Plugs



Male Thread, Metric

2010	Thread	Hex Size mm	Length mm
02SFAM03MXX	M3	6	11
Tech Sheet 10276			



Hose Tail

2010	To Suit Hose ID mm	Length mm
02SFTF03MXX	3	13
Tech Sheet 10276		

Other materials, seals and finishes available on request, please contact our technical department for further details.




You might also need
FT Pro Micro One Touch + Plastic Push-in Fittings
see pages **787-791**



SERIES 13 JAPANESE PROFILE



 **Working Temperature:**
-20°C to +100°C
Standard seal NBR

 **Maximum Static Working Pressure:**
PB 35 bar (500 psi)



Interchangeability:
Rectus 03,
Nitto Kohki 200 (Japan)

Material:
Brass and NBR seal (standard series) coupling.
Application:
General purpose pneumatic coupling



Profile

Couplings



Male Thread, BSPT

1310	Thread	Hex Size mm	Length mm
13KAAK13MPX	1/4"	22	49
13KAAK17MPX	3/8"	22	49
13KAAK21MPX	1/2"	22	53

Tech Sheet 501



Female Thread, BSPT

1310	Thread	Hex Size mm	Length mm
13KAIW13MPX	1/4"	22	45
13KAIW17MPX	3/8"	22	45
13KAIW21MPX	1/2"	24	48

Tech Sheet 501



Hose Tail

1310	To Suit Hose ID	Hex Size mm	Length mm
13KATF06MPX	6mm (1/4")	21	62
13KATF08MPX	8mm (5/16")	21	62
13KATF10MPX	10mm (3/8")	21	62
13KATF13MPX	13mm (1/2")	21	62

Tech Sheet 501

Plugs



Male Thread, BSPT

1310	Thread	Hex Size mm	Length mm
13SFAK13SXN	1/4"	14	37
13SFAK17SXN	3/8"	17	37
13SFAK21SXN	1/2"	22	44

Tech Sheet 501



Female Thread, BSPT

1310	Thread	Hex Size mm	Length mm
13SFIW13SXN	1/4"	17	33
13SFIW17SXN	3/8"	19	33
13SFIW21SXN	1/2"	24	36

Tech Sheet 501



Hose Tail

1310	To Suit Hose ID	Length mm
13SFTF06SXN	6mm (1/4")	48
13SFTF08SXN	8mm (5/16")	48
13SFTF10SXN	10mm (3/8")	48
13SFTF13SXN	13mm (1/2")	48

Tech Sheet 501

SERIES 14 ARO PROFILE



Working Temperature:
-20°C to +100°C
Standard Seal NBR

Maximum Static Working Pressure:
PB 35 bar (500 psi)

Single Shut Off

Interchangeability:
Rectus 22, ARO 210, Parker 50,
JWL 522, JWL 532.

Material:
Brass and NBR seal (standard series) coupling.

Application:
General purpose pneumatic coupling



Profile

Couplings



Male Thread, BSPP

2210	Thread	Hex Size mm	Length mm
14KAAW13MPX	1/4"	22	43
14KAAW17MPX	3/8"	22	43
14KAAW21MPX	1/2"	22	46

Tech Sheet 502



Female Thread, BSPP

2210	Thread	Hex Size mm	Length mm
14KAIW13MPX	1/4"	22	43
14KAIW17MPX	3/8"	22	43
14KAIW21MPX	1/2"	24	46

Tech Sheet 502

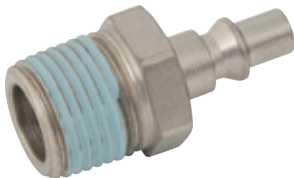


Hose Tail

2210	To Suit Hose ID mm	Hex Size mm	Length mm
14KATF06MPX	6	21	60
14KATF08MPX	8	21	60
14KATF09MPX	9	21	60
14KATF10MPX	10	21	60
14KATF13MPX	13	21	60

Tech Sheet 502

Plugs



Male Thread, BSPT

2210	Thread	Hex Size mm	Length mm
22SFAK13SXN	1/4"	14	41
22SFAK17SXN	3/8"	17	41
22SFAK21SXN	1/2"	22	46

Tech Sheet 30001



Female Thread, BSPP

2210	Thread	Hex Size mm	Length mm
22SFIW13SXN	1/4"	17	35
22SFIW17SXN	3/8"	19	35
22SFIW21SXN	1/2"	24	38

Tech Sheet 30001



Hose Tail

2210	To Suit Hose ID	Length mm
22SFTF06SXN	6	49
22SFTF08SXN	8	49
22SFTF10SXN	10	49
22SFTF13SXN	13	49

Tech Sheet 30001

Other materials, seals and finishes available on request, please contact our technical department for further details.

SERIES 14 SELF VENTING LOW PRESSURE



Working Temperature:
-20°C to +60°C

Maximum Static Working Pressure:
PB 12 bar (174 PSI)



Material:
Brass nickel plated, thermoplastic sleeve, NBR seal.

Application:
General purpose pneumatic coupling, self-venting on disconnection as per ISO 4414.



Profile

Couplings



Male Thread, BSPT

0194	Thread	Hex Size mm	Length mm
14KEAK13MPN	1/4"	22	58
14KEAK21MPN	1/2"	24	63



Female Thread, BSPP

0194	Thread	Hex Size mm	Length mm
14KEIW13MPN	1/4"	22	57
14KEIW17MPN	3/8"	22	57
14KEIW21MPN	1/2"	24	60



Hose Tail

0194	To Suit Hose ID mm	Hex Size mm	Length mm
14KETF06MPN	6	22	71
14KETF08MPN	8	22	71
14KETF09MPN	9	22	71
14KETF10MPN	10	22	71
14KETF13MPN	13	22	71

Plugs



Male Thread, BSPT

2210	Thread	Hex Size mm	Length mm
22SFAK13SXN	1/4"	14	41
22SFAK17SXN	3/8"	17	41
22SFAK21SXN	1/2"	22	46

Tech Sheet 30001



Female Thread, BSPP

2210	Thread	Hex Size mm	Length mm
22SFIW13SXN	1/4"	17	35
22SFIW17SXN	3/8"	19	35
22SFIW21SXN	1/2"	24	38

Tech Sheet 30001



Hose Tail

2210	To Suit Hose ID	Length mm
22SFTF06SXN	6	49
22SFTF08SXN	8	49
22SFTF10SXN	10	49
22SFTF13SXN	13	49

Tech Sheet 30001

SERIES 17 QUICK COUPLING ENGLISH PROFILE

 **Working Temperature:**
-20°C to +100°C
Standard seal NBR

 **Maximum Static Working Pressure:**
PB 35 bar (500 psi)



ULTRA-FLO >>>

Interchangeability:
Standard Schrader series NW5
Flow Rate: 865 L/min

Material:
Steel nickel plated, Steel zinc plated, Brass nickel plated,
NBR seal (standard series coupling).

Application:
General purpose pneumatic coupling, garages, workshops.

Couplings

Male Thread, BSPT



1710	Thread	Hex Size mm	Length mm
17KAAK13SPN	1/4"	19	63
17KAAK17SPN	3/8"	19	62
17KAAK21SPN	1/2"	22	63

Tech Sheet 503

Female Thread, BSPP



1710	Thread	Hex Size mm	Length mm
17KAIW13SPN	1/4"	19	58
17KAIW17SPN	3/8"	19	57
17KAIW21SPN	1/2"	24	60

Tech Sheet 503

Hose Tail



1710	To Suit Hose ID	Hex Size mm	Length mm
17KATF06SPN	6mm (1/4")	19	76
17KATF08SPN	8mm (5/16")	19	76
17KATF10SPN	10mm (3/8")	19	76
17KATF13SPN	13mm (1/2")	19	76

Tech Sheet 503

Plugs

Male Thread, BSPT



1710	Thread	Hex Size mm	Length mm
17SFAK10SXN	1/8"	11	37
17SFAK13SXN	1/4"	14	42
17SFAK17SXN	3/8"	17	42
17SFAK21SXN	1/2"	21	43

Tech Sheet 503

Female Thread, BSPP



1710	Thread	Hex Size mm	Length mm
17SFIW10SXN	1/8"	14	33
17SFIW13SXN	1/4"	17	36
17SFIW17SXN	3/8"	19	39
17SFIW21SXN	1/2"	24	41

Tech Sheet 503

Hose Tail



1710	To Suit Hose ID	Length mm
17SFTF06SXN	6mm (1/4")	58
17SFTF08SXN	8mm (5/16")	52
17SFTF10SXN	10mm (3/8")	52
17SFTF13SXN	13mm (1/2")	52

Tech Sheet 503

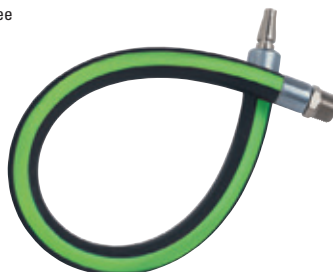
Leader Hoses

A 'Leader Hose' is a length of flexible hose which should be fitted between an air tool and the connecting coupling. By absorbing the impact of a pneumatic impact tool, a leader hose will significantly increase the life expectancy of the coupling.

3/8" Bore Rubber-Tech Hose, Series 17 Plug x Male Thread, BSPT

1710	Thread	Length mm
LH17/13K	1/4"	381
LH17/17K	3/8"	381
LH17/21K	1/2"	381

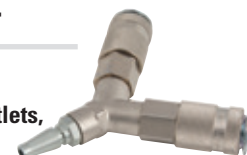
Tech Sheet 503



Profile

Y Connector

2 x Coupling Outlets, 1 x Plug Inlet

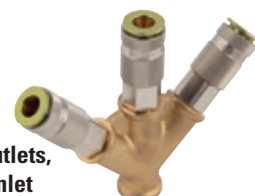


1710	Length mm
17Y	114

Tech Sheet 503

Triple Outlet Connectors

3 x Coupling Outlets, 1 x 3/8" BSPP Inlet



1710	Length mm
17W	111

Tech Sheet 503

WARNING – Leader Hoses



The Health and Safety Executive guide states - "the plug should not be screwed directly into the inlet port, but should be fitted onto a short isolation hose, thus isolating the plug and coupling from the tool vibration".

Other materials, seals and finishes available on request, please contact our technical department for further details.

SERIES 18 QUICK COUPLING ISO 6150 'C' PROFILE



 **Working Temperature:**
-20°C to +100°C
Standard seal NBR

 **Maximum Static Working Pressure:**
PB 35 bar (500 psi)



Interchangeability:
ISO 6150 C, Staubli RBE06

Material:
Brass nickel plated, NBR seal (standard series coupling).
Application:
Industrial pneumatic coupling, robust design.



Profile

Couplings



Male Thread, BSPT

0194	Thread	Hex Size mm	Length mm
18KAAK13MPN	1/4"	19	63
18KAAK17MPN	3/8"	19	62
18KAAK21MPN	1/2"	22	63

Tech Sheet 2098



Female Thread, BSPP

0194	Thread	Hex Size mm	Length mm
18KAIW13MPN	1/4"	19	58
18KAIW17MPN	3/8"	19	57
18KAIW21MPN	1/2"	24	60

Tech Sheet 2098



Hose Tail

0194	To Suit Hose ID mm	Hex Size mm	Length mm
18KATF06MPN	6	19	76
18KATF08MPN	8	19	76

Tech Sheet 2098

Plugs



Male Thread, BSPT

0194	Thread	Length mm
18SFAK13SXN	1/4"	41

Tech Sheet 2098



Female Thread, BSPP

0194	Thread	Hex Size mm	Length mm
18SFIW13SXN	1/4"	19	43
18SFIW17SXN	3/8"	19	44

Tech Sheet 2098



Hose Tail

0194	To Suit Hose ID mm	Length mm
18SFTF06SXN	6	56
18SFTF08SXN	8	56
18SFTF10SXN	10	56

Tech Sheet 2098

Other materials, seals and finishes available on request, please contact our technical department for further details.

SERIES 18 QUICK COUPLING ISO 6150 'C' PROFILE SELF VENTING LOW PRESSURE



Working Temperature:
-20°C to +60°C
Standard seal NBR

Maximum Static Working Pressure:
PB 35 bar (500 psi)



Material:
Brass nickel plated, NBR seal
(standard series coupling).

Application:
General purpose pneumatic coupling, self-venting on disconnection.

Couplings



Female Thread, BSPP

0194	Thread	Hex Size mm	Length mm
18KEIW21SPN	1/2"	24	65
Tech Sheet 504			



Profile

Plugs



Male Thread, BSPT

0194	Thread	Length mm
18SFAK13SXN	1/4"	41
Tech Sheet 504		



Female Thread, BSPP

0194	Thread	Hex Size mm	Length mm
18SFIW13SXN	1/4"	19	43
18SFIW17SXN	3/8"	19	44
Tech Sheet 504			



Hose Tail

0194	To Suit Hose ID mm	Length mm
18SFTF06SXN	6	56
18SFTF08SXN	8	56
18SFTF10SXN	10	56
Tech Sheet 504		



You might also need
FT Pro Pneumatic Tube
see page 898



Other materials, seals and finishes available on request, please contact our technical department for further details.

SERIES 19 QUICK COUPLING ENGLISH INDUSTRIAL PROFILE



 **Working Temperature:**
-20°C to +100°C
Standard seal NBR

 **Maximum Static Working Pressure:**
PB 35 bar (500 psi)



Interchangeability:
Standard PCL series.

Material:
Steel nickel plated, Brass nickel plated,
NBR seal (standard series coupling).
Application:
General purpose pneumatic coupling, original PCL.



Profile

Couplings



Male Thread, BSPT

1910	Thread	Hex Size mm	Length mm
19KAAK13MPX	1/4"	19	63
19KAAK17MPX	3/8"	19	63
19KAAK21MPX	1/2"	22	68

Tech Sheet 505



Female Thread, BSPP

1910	Thread	Hex Size mm	Length mm
19KAIW13MPX	1/4"	19	58
19KAIW17MPX	3/8"	19	58
19KAIW21MPX	1/2"	24	60

Tech Sheet 505



Hose Tail

1910	To Suit Hose ID	Hex Size mm	Length mm
19KATF06MPX	6mm (1/4")	19	76
19KATF08MPX	8mm (5/16")	19	76
19KATF10MPX	10mm (3/8")	19	76
19KATF13MPX	13mm (1/2")	19	76

Tech Sheet 505

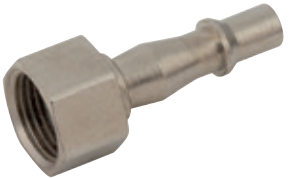
Plugs



Male Thread, BSPT

1910	Thread	Hex Size mm	Length mm
19SFAK13SXN	1/4"	14	50
19SFAK17SXN	3/8"	17	50
19SFAK21SXN	1/2"	21	57

Tech Sheet 505



Female Thread, BSPP

1910	Thread	Hex Size mm	Length mm
19SFIW13SXN	1/4"	17	46
19SFIW17SXN	3/8"	17	47
19SFIW21SXN	1/2"	19	47

Tech Sheet 505



Hose Tail

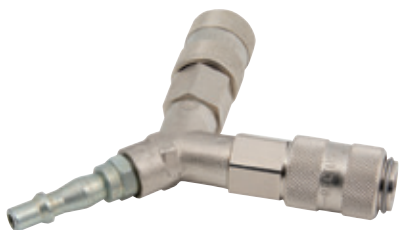
1910	To Suit Hose ID	Length mm
19SFTF05SXN	5mm	60
19SFTF06SXN	6mm (1/4")	60
19SFTF08SXN	8mm (5/16")	60
19SFTF10SXN	10mm (3/8")	60
19SFTF13SXN	13mm (1/2")	60

Tech Sheet 505

Other materials, seals and finishes available on request, please contact our technical department for further details.

SERIES 19

Y Connector



2 x Coupling Outlets, 1 x Plug Inlet

1910	Length mm
19Y	117

Triple Outlet Connectors



3 x Coupling Outlets, 1 x 3/8" BSPP Inlet

1910	Length mm
19W	111



3 x Coupling Outlets, 1 x 1/4" BSPP Inlet

1910
M3-19

Free Angle Rotating Joint



Male Thread, BSPT

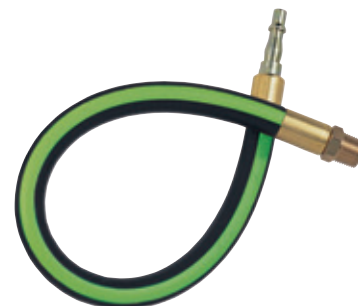
1910	Thread
19FAAK13	1/4"
19FAAK17	3/8"
19FAAK21	1/2"



Female Thread, BSPP

1910	Thread
19FAIW13	1/4"

Leader Hoses



3/8" Bore Rubber-Tech Hose,
Series 19 Plug x Male Thread, BSPT

1910	Thread	Length mm
LH19/13K	1/4"	381
LH19/17K	3/8"	381
LH19/21K	1/2"	381
Tech Sheet 1337		

A 'Leader Hose' is a length of flexible hose which should be fitted between an air tool and the connecting coupling. By absorbing the impact of a pneumatic impact tool, a leader hose will significantly increase the life expectancy of the coupling.

WARNING – Leader Hoses



The Health and Safety Executive guide states - "the plug should not be screwed directly into the inlet port, but should be fitted onto a short isolation hose, thus isolating the plug and coupling from the tool vibration".

Other materials, seals and finishes available on request, please contact our technical department for further details.

SERIES 20 QUICK COUPLING INTERNATIONAL PROFILE

 **Working Temperature:**
-20°C to +100°C
Standard seal NBR

 **Maximum Static Working Pressure:**
PB 35 bar (500 psi)



Single Shut Off

Interchangeability:
Rectus 91, Walther 06-003
Flow Rate:
165 L/min

Material:
Brass nickel plated, NBR seal (standard series coupling).
Application:
General purpose pneumatic coupling, medical, dental, robotics, instrumentation.



Profile

Couplings



Male Thread, Metric & BSPP

2010	Thread	Hex Size mm	Length mm
20KAAM05MPN	M5	9	26
20KAAW10MPN	1/8"	11	28

Tech Sheet 506



Female Thread, Metric & BSPP

2010	Thread	Hex Size mm	Length mm
20KAIM05MPN	M5	9	26
20KAIW10MPN	1/8"	12	28

Tech Sheet 506



Hose Tail

2010	To Suit Hose ID mm	Length mm
20KATF03MPN	3	35
20KATF04MPN	4	35
20KATF05MPN	5	35

Tech Sheet 506



Quick Fit Tube Connection

2010	To Suit Tube mm	Hex Size mm	Length mm
20KAK004MPN	3 x 4	9	34
20KAK006MPN	4 x 6	9	34

Tech Sheet 506



Panel Mount, Quick Fit Tube Connection

2010	To Suit Tube mm	Hex Size mm	Length mm
20KAKS04MPN	3 x 4	12	45
20KAKS06MPN	4 x 6	12	45

Tech Sheet 506



Panel Mount, Standard Hose Tail

2010	To Suit Hose ID mm	Hex Size mm	Length mm
20SFTS03MXN	3	12	45

Tech Sheet 506

Plugs



Male Thread, Metric & BSPP

2010	Thread	Hex Size mm	Length mm
20SFAM05MXN	M5	7	18
20SFAW10MXN	1/8"	11	20

Tech Sheet 506



Quick Fit Tube Connection

2010	To Suit Tube mm	Hex Size mm	Length mm
20SFK004MXN	3 x 4	7	25
20SFK005MXN	3 x 5	7	25

Tech Sheet 506



Female Thread, Metric & BSPP

2010	Thread	Hex Size mm	Length mm
20SFIM05MXN	M5	7	17
20SFIW10MXN	1/8"	12	19

Tech Sheet 506



Panel Mount, Quick Fit Tube Connection

2010	To Suit Tube mm	Hex Size mm	Length mm
20SFKS06MXN	3 x 6	12	38

Tech Sheet 506



Hose Tail

2010	To Suit Hose ID mm	Length mm
20SFTF03MXN	3	24
20SFTF04MXN	4	24
20SFTF05MXN	5	24

Tech Sheet 506

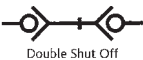
Other materials, seals and finishes available on request, please contact our technical department for further details.

SERIES 20 QUICK COUPLING INTERNATIONAL PROFILE



Working Temperature:
-20°C to +100°C
Standard seal NBR

Maximum Static Working Pressure:
PB 35 bar (500 psi)



Profile

Material:
Brass, NBR seal
(standard series coupling).

Application:
General purpose pneumatic coupling, medical,
dental, robotics, instrumentation.

Couplings



Male Thread, Metric & BSPP

2010	Thread	Hex Size mm	Length mm
20KBAM05MPX	M5	9	26
20KBAW10MPX	1/8"	11	28

Tech Sheet 507



Female Thread, Metric & BSPP

2010	Thread	Hex Size mm	Length mm
20KBIM05MPX	M5	9	26
20KBIW10MPX	1/8"	12	28

Tech Sheet 507



Quick Fit Tube Connection

2010	Thread	Hex Size mm	Length mm
20KBK006MPX	4 x 6	9	34

Tech Sheet 507



Hose Tail

2010	To Suit Hose ID mm	Hex Size mm	Length mm
20KBTf03MPX	3	11	35
20KBTf04MPX	4	11	35

Tech Sheet 507

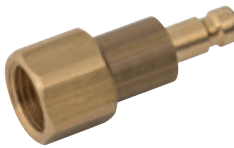
Plugs



Male Thread, Metric & BSPP

2010	Thread	Hex Size mm	Length mm
20SBAM05MPX	M5	9	28
20SBAW10MPX	1/8"	11	30

Tech Sheet 507



Female Thread, Metric & BSPP

2010	Thread	Hex Size mm	Length mm
20SBIM05MPX	M5	9	26
20SBIW10MPX	1/8"	12	30

Tech Sheet 507



Quick Fit Tube Connection

2010	To Suit Tube mm	Hex Size mm	Length mm
20SBK006MPX	4 x 6	9	30.5

Tech Sheet 507



Hose Tail

2010	To Suit Hose ID mm	Hex Size mm	Length mm
20SBTF04MPX	4	8	36

Tech Sheet 507

Other materials, seals and finishes available on request, please contact our technical department for further details.

SERIES 21 QUICK COUPLING WORLDWIDE PROFILE

 **Working Temperature:**
-20°C to +100°C
Standard seal NBR

 **Maximum Static Working Pressure:**
PB 35 bar (500 psi)



Single Shut Off

Interchangeability:
Rectus 90, Camozzi, EW0.

Material:
Brass nickel plated, NBR seal (standard series coupling).
Application:
General purpose pneumatic coupling, medical, dental, robotics, instrumentation.



Profile

Couplings



Male Thread, BSPP

2110	Thread	Hex Size mm	Length mm
21KAAW10MPN	1/8"	14	36
21KAAW13MPN	1/4"	17	38
21KAAW17MPN	3/8"	19	38
Tech Sheet 508			



Female Thread, BSPP

2110	Thread	Hex Size mm	Length mm
21KAIW10MPN	1/8"	14	36
21KAIW13MPN	1/4"	17	38
21KAIW17MPN	3/8"	19	38
Tech Sheet 508			



Hose Tail

2110	To Suit Hose ID	Hex Size mm	Length mm
21KATF04MPN	4mm	14	46
21KATF06MPN	6mm (1/4")	14	46
21KATF08MPN	8mm (5/16")	14	46
21KATF09MPN	9mm	14	46
21KATF10MPN	10mm (3/8")	14	46
Tech Sheet 508			



Panel Mount, Standard Hose Tail

2110	To Suit Hose ID	Hex Size mm	Length mm
21KATS04MPN	4mm	14	60
21KATS06MPN	6mm (1/4")	17	60
21KATS08MPN	8mm (5/16")	17	60
Tech Sheet 508			



Quick Fit Tube Connection

2110	To Suit Tube mm	Hex Size mm	Length mm
21KAK006MPN	4 x 6	14	42
21KAK008MPN	6 x 8	14	42
Tech Sheet 508			



Panel Mount, Male Thread, BSPP

2110	Thread	Hex Size mm	Length mm
21KAAS13MPN	1/4"	17	43
Tech Sheet 508			



Panel Mount, Quick Fit Tube Connection

2110	To Suit Tube mm	Hex Size mm	Length mm
21KAKS06MPN	4 x 6	14	54
21KAKS08MPN	6 x 8	17	54
Tech Sheet 508			



Quick Fit Tube Connection with Spring Guard

2110	To Suit Tube mm	Hex Size mm	Length mm
21KAKK06MPN	4 x 6	14	125
21KAKK08MPN	6 x 8	14	130
Tech Sheet 508			

Other materials, seals and finishes available on request, please contact our technical department for further details.

SERIES 21 QUICK COUPLING WORLDWIDE PROFILE



 **Working Temperature:**
-20°C to +100°C
Standard seal NBR

 **Maximum Static Working Pressure:**
PB 35 bar (500 psi)

Plugs



Male Thread, BSPP

2110	Thread	Hex Size mm	Length mm
21SFAW10MXN	1/8"	14	25
21SFAW13MXN	1/4"	17	28
21SFAW17MXN	3/8"	17	28
Tech Sheet 508			



Female Thread, BSPP

2110	Thread	Hex Size mm	Length mm
21SFIW10MXN	1/8"	14	25
21SFIW13MXN	1/4"	17	25
21SFIW17MXN	3/8"	19	26
Tech Sheet 508			



Hose Tail

2110	To Suit Hose ID	Length mm
21SFTF04MXN	4mm	32
21SFTF05MXN	5mm	32
21SFTF06MXN	6mm (1/4")	32
21SFTF08MXN	8mm (5/16")	32
21SFTF09MXN	9mm	33
21SFTF10MXN	10mm (3/8")	33
Tech Sheet 508		



Panel Mount, Standard Hose Tail

2110	To Suit Hose ID	Hex Size mm	Length mm
21SFTS04MXN	4mm	14	50
21SFTS06MXN	6mm (1/4")	14	50
21SFTS09MXN	9mm	14	50
Tech Sheet 508			



Quick Fit Tube Connection

2110	To Suit Tube mm	Length mm
21SFK006MXN	4 x 6	32
21SFK008MXN	6 x 8	32
Tech Sheet 508		



Panel Mount, Quick Fit Tube Connection

2110	To Suit Tube mm	Hex Size mm	Length mm
21SFKS06MXN	4 x 6	14	44
21SFKS08MXN	6 x 8	17	44
Tech Sheet 508			

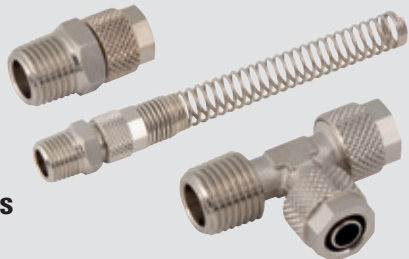


Quick Fit Tube Connection with Spring Guard

2110	To Suit Tube mm	Hex Size mm	Length mm
21SFKK06MXN	4 x 6	12	115
21SFKK08MXN	6 x 8	14	120
Tech Sheet 508			



You might also need
Brass Quick-Fit Push-on Fittings
see pages 1156-1159



Other materials, seals and finishes available on request, please contact our technical department for further details.

SERIES 21 QUICK COUPLING WORLDWIDE PROFILE PUSH-IN



Working Temperature:
-20°C to +100°C
Standard seal NBR

Maximum Static Working Pressure:
PB 35 bar (500 psi)



Flow Rate:
560 L/min

Material:
Brass nickel plated, NBR seal (standard series coupling).
Application:
Usable for air, oil and water. Ideally suited where tubing is often changed.



Profile

Couplings



Push-in

2010	OD mm	Hex Size mm	Length mm
21KARP06MPN	6	14	43.5
21KARP08MPN	8	17	48

Tech Sheet 508

Plugs



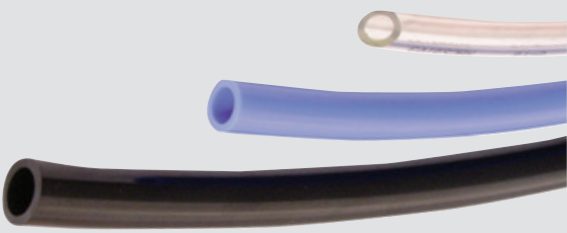
Push-in

2010	OD mm	Hex Size mm	Length mm
21SFRP06MPN	6	17	30.5
21SFRP08MPN	8	17	37

Tech Sheet 508



You might also need
Parker Legris Pneumatic Tube
see page 908



Other materials, seals and finishes available on request, please contact our technical department for further details.

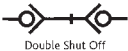
SERIES 21 QUICK COUPLING WORLDWIDE PROFILE



Working Temperature:
-20°C to +100°C
Standard seal NBR



Maximum Static Working Pressure:
PB 35 bar (500 PSI)



Double Shut Off

Flow Rate:
310 L/min

Material:
Brass, NBR seal (standard series coupling).
Application:
General purpose pneumatic coupling, medical, dental, robotics, instrumentation.



Profile

Couplings



Male Thread, BSPP

2110	Thread	Hex Size mm	Length mm
21KBAW10MPX	1/8"	14	36
21KBAW13MPX	1/4"	17	38

Tech Sheet 509



Female Thread, BSPP

2110	Thread	Hex Size mm	Length mm
21KBIW10MPX	1/8"	14	36
21KBIW13MPX	1/4"	17	38

Tech Sheet 509



Quick Fit Tube Connection

2110	To Suit Tube mm	Hex Size mm	Length mm
21KBO06MPX	6 x 4	14	42
21KBO08MPX	8 x 6	14	42

Tech Sheet 509

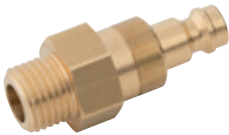


Hose Tail

2110	To Suit Hose ID	Hex Size mm	Length mm
21KBT04MPX	4mm (1/8")	14	46
21KBT06MPX	6mm (1/4")	14	46
21KBT08MPX	8mm (5/16")	14	46

Tech Sheet 509

Plugs



Male Thread, BSPP

2110	Thread	Hex Size mm	Length mm
21SBAW10MPX	1/8"	14	40

Tech Sheet 509



Female Thread, BSPP

2110	Thread	Hex Size mm	Length mm
21SBIW10MPX	1/8"	14	40

Tech Sheet 509



Hose Tail

2110	To Suit Hose ID	Hex Size mm	Length mm
21SBTF08MPX	8mm (5/16")	14	50

Tech Sheet 509



Quick Fit Tube Connection

2110	To Suit Tube mm	Hex Size mm	Length mm
21SBK006MPX	6 x 4	14	46
21SBK008MPX	8 x 6	14	46

Tech Sheet 509

Other materials, seals and finishes available on request, please contact our technical department for further details.

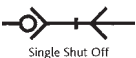
SERIES 21 SAFETY QUICK COUPLING

WORLDWIDE PROFILE SAFETY LOCKING



 **Working Temperature:**
-20°C to +100°C
Standard seal NBR

 **Maximum Static Working Pressure:**
PB 35 bar (500 PSI)



Single Shut Off

Interchangeability:
Rectus design

Material:
Brass nickel plated, NBR seal (standard series coupling).
Application:
Air breathing systems, medical, laboratories, diving suits etc.



Profile

Couplings



Male Thread, BSPP

2110	Thread	Hex Size mm	Length mm
21KSAW10MPN	1/8"	14	36
21KSAW13MPN	1/4"	17	38
Tech Sheet 10279			



Female Thread, BSPP

2110	Thread	Hex Size mm	Length mm
21KSIW10MPN	1/8"	14	36
21KSIW13MPN	1/4"	17	38
Tech Sheet 10279			



Hose Tail

2110	To Suit Hose ID	Hex Size mm	Length mm
21KSTF06MPN	6mm (1/4")	14	46
21KSTF08MPN	8mm (5/16")	14	46
21KSTF10MPN	10mm (3/8")	14	46
Tech Sheet 10279			

Plugs



Male Thread, BSPP

2110	Thread	Hex Size mm	Length mm
21SSAW10MXN	1/8"	14	25
21SSAW13MXN	1/4"	17	28
Tech Sheet 10279			



Female Thread, BSPP

2110	Thread	Hex Size mm	Length mm
21SSIW10MXN	1/8"	14	25
21SSIW13MXN	1/4"	17	26
Tech Sheet 10279			



Hose Tail

2110	To Suit Hose ID	Length mm
21SSTF06MXN	6mm (1/4")	32
21SSTF08MXN	8mm (5/16")	32
21SSTF10MXN	10mm (3/8")	33
Tech Sheet 10279		

Other materials, seals and finishes available on request, please contact our technical department for further details.

SERIES 21 CODED QUICK COUPLINGS

 **Working Temperature:**
-20°C to +100°C
Standard seal NBR

 **Maximum Static Working Pressure:**
PB 35 bar (500 PSI)



Interchangeability:
Rectus design

Material:
Brass nickel plated, NBR seal (standard series coupling).

Application:
Non-interchangeable, each coupling and plug has an individual shape so they can only be connected to each other, colour coded, one hand operation.



Profile

Couplings



Male Thread, BSPP

2110	Colour	Thread	Length mm
21KAAW10MPN0	Green	1/8"	47
21KAAW10MPN3	Brown	1/8"	47
21KAAW10MPN6	Blue	1/8"	47
21KAAW10MPN8	Red	1/8"	47
21KAAW13MPN0	Green	1/4"	47
21KAAW13MPN3	Brown	1/4"	47
21KAAW13MPN6	Blue	1/4"	47
21KAAW13MPN8	Red	1/4"	47
Tech Sheet 510			



Female Thread, BSPP

2110	Colour	Thread	Length mm
21KAIW10MPN0	Green	1/8"	47
21KAIW10MPN6	Blue	1/8"	47
21KAIW10MPN8	Red	1/8"	47
21KAIW13MPN0	Green	1/4"	47
21KAIW13MPN6	Blue	1/4"	47
21KAIW13MPN8	Red	1/4"	47
Tech Sheet 510			



Hose Tail

2110	Colour	To Suit Hose ID mm	Length mm
21KATF10MPN8	Red	10	69
Tech Sheet 510			

Plugs



Male Thread, BSPP

2110	Colour	Thread	Length mm
21SFAW10MXN0	Green	1/8"	39.5
21SFAW10MXN3	Brown	1/8"	39.5
21SFAW10MXN6	Blue	1/8"	39.5
21SFAW10MXN8	Red	1/8"	39.5
21SFAW13MXN0	Green	1/4"	41.5
21SFAW13MXN3	Brown	1/4"	41.5
21SFAW13MXN6	Blue	1/4"	41.5
21SFAW13MXN8	Red	1/4"	41.5
Tech Sheet 510			



Female Thread, BSPP

2110	Colour	Thread	Length mm
21SFIW10MXN0	Green	1/8"	38.5
21SFIW10MXN3	Brown	1/8"	38.5
21SFIW10MXN6	Blue	1/8"	38.5
21SFIW10MXN8	Red	1/8"	38.5
21SFIW13MXN0	Green	1/4"	39
21SFIW13MXN3	Brown	1/4"	39
21SFIW13MXN6	Blue	1/4"	39
21SFIW13MXN8	Red	1/4"	39
Tech Sheet 510			



Hose Tail


2110	Colour	To Suit Hose ID mm	Length mm
21SFTF04MXN0	Green	4	47
21SFTF04MXN6	Blue	4	47
21SFTF06MXN8	Red	6	47
Tech Sheet 510			

Other materials, seals and finishes available on request, please contact our technical department for further details.

SERIES 21 QUICK COUPLING WORLDWIDE PROFILE THERMOPLASTIC



 **Working Temperature:**
Rectupom -20°C to +80°C
RectuChem -20°C to +120°C

 **Working Pressure:**
Rectupom 10 bar @ 20°C
RectuChem 8 bar @ 20°C



Interchangeability:
Rectus design

Material:
RectuPom – thermoplastic POM Black
RectuChem – thermoplastic PVDF White

Application:
Suitable for liquids, gases, drinking water, laboratories,
medical technology and food areas.



Profile

Couplings



Male Thread, BSPP, RectuPom

2110	Thread	Hex Size mm	Length mm
21KBAW10DPX	1/8"	17	50
21KBAW13DPX	1/4"	17	52
Tech Sheet 10280			



Female Thread, BSPP, RectuPom

2110	Thread	Hex Size mm	Length mm
21KBIW10DPX	1/8"	17	53
21KBIW13DPX	1/4"	17	53
Tech Sheet 10280			



Hose Tail, RectuPom

2110	To Suit Hose ID mm	Hex Size mm	Length mm
21KBTf04DPX	4	17	60
21KBTf06DPX	6	17	60
Tech Sheet 10280			



Quick Fit Tube Connection, RectuPom

2110	To Suit Tube mm	Hex Size mm	Length mm
21KBK006DPX	4 x 6	17	56
Tech Sheet 10280			



Female Thread, BSPP, RectuChem

2110	Thread	Hex Size mm	Length mm
21KBIW10FVX	1/8"	17	53
Tech Sheet 10280			



Quick Fit Tube Connection, RectuChem

2110	To Suit Tube mm	Hex Size mm	Length mm
21KBK006FVX	4 x 6	17	56
Tech Sheet 10280			



Panel Mount, Quick Fit Tube Connection,
RectuPom

2110	To Suit Tube mm	Hex Size mm	Length mm
21KBKS06DPX	4 x 6	17	68
Tech Sheet 10280			

Other materials, seals and finishes available on request, please contact our technical department for further details.

SERIES 21 THERMOPLASTIC QUICK COUPLING WORLDWIDE PROFILE



Plugs



Male Thread, BSPP, RectuPom

2110	Thread	Hex Size mm	Length mm
21SFAW10DXX	1/8"	14	25
21SFAW13DXX	1/4"	17	28
Tech Sheet 10280			



Female Thread, BSPP, RectuPom

2110	Thread	Hex Size mm	Length mm
21SFIW13DXX	1/4"	17	25
Tech Sheet 10280			



Hose Tail, RectuPom

2110	To Suit Hose ID mm	Length mm
21SFTF06DXX	6	32
Tech Sheet 10280		



Quick Fit Tube Connection, RectuPom

2110	To Suit Tube mm	Hex Size mm	Length mm
21SFK006DXX	4 x 6	14	32
Tech Sheet 10280			



Female Thread, BSPP, RectuChem

2110	Thread	Hex Size mm	Length mm
21SFIW13FXX	1/4"	17	26
Tech Sheet 10280			



Panel Mount, Standard Hose Tail, RectuChem

2110	To Suit Hose ID mm	Hex Size mm	Length mm
21SFTS04FXX	4	14	50
Tech Sheet 10280			



Quick Fit Tube Connection, RectuChem

2110	To Suit Tube mm	Hex Size mm	Length mm
21SFK008FXX	6 x 8	17	32
Tech Sheet 10280			

Other materials, seals and finishes available on request, please contact our technical department for further details.

You might also need
Translucent Silicone & FEP Tubing
see page 909



SERIES 21 THERMOPLASTIC QUICK COUPLING WORLDWIDE PROFILE



Plugs (with Valve)



Male Thread, BSPP, RectuPom

2110	Thread	Hex Size mm	Length mm
21SBAW10DPX	1/8"	17	36
21SBAW13DPX	1/4"	17	38
Tech Sheet 10280			



Quick Fit Tube Connection, RectuPom

2110	To Suit Tube mm	Hex Size mm	Length mm
21SBK006DPX	4 x 6	17	42
Tech Sheet 10280			



Quick Fit Tube Connection, RectuChem

2110	To Suit Tube mm	Hex Size mm	Length mm
21SBK008FVX	6 x 8	17	42
Tech Sheet 10280			



Female Thread, BSPP, RectuPom

2110	Thread	Hex Size mm	Length mm
21SBIW10DPX	1/8"	17	39
21SBIW13DPX	1/4"	17	41
Tech Sheet 10280			



Panel Mount, Quick Fit Tube Connection, RectuPom

2110	To Suit Tube mm	Hex Size mm	Length mm
21SBKS06DPX	4 x 6	17	54
Tech Sheet 10280			

Sleeve Mounting for Front Panel Installation



Panel Mount, Quick Fit Tube Connection, RectuPom

2110	To Suit Tube mm	Hex Size mm	Length mm
21KBKE06DPX	4 x 6	17	56
Tech Sheet 10280			



Panel Mount, Quick Fit Tube Connection, RectuChem

2110	To Suit Tube mm	Hex Size mm	Length mm
21KBKE06FVX	4 x 6	17	56
Tech Sheet 10280			



Panel Mount, Standard Hose Tail, RectuPom

2110	To Suit Hose ID mm	Hex Size mm	Length mm
21KBTE04DPX	4	17	60
Tech Sheet 10280			

Other materials, seals and finishes available on request, please contact our technical department for further details.



For FT Pro Polypropylene Hose Tails & Adaptors
see page 1149

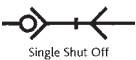


SERIES 22 QUICK COUPLING ARO PROFILE



Working Temperature:
-20°C to +100°C

Maximum Working Pressure:
35 bar



Interchangeability:
Rectus 14, Aro 210, Parker 50,
Orion 44510, JWL 522 & JWL 532

Material:
Brass nickel plated, NBR seal (standard series coupling).
Application:
Coupling system with single-hand operation. High Flow valve for optimum flow and low pressure drop. Specially suited to use with gaseous media in industry. The steel sleeve counters oscillating forces



Profile

Couplings



Male Thread, BSPP

2210	Thread	Hex Size mm	Length mm
22KAAK13MPN	1/4"	19	61
22KAAK17MPN	3/8"	19	60
Tech Sheet 30001			



Female Thread, BSPP

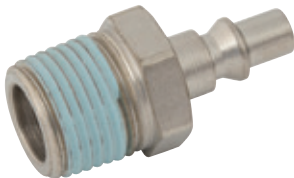
2210	Thread	Hex Size mm	Length mm
22KAIW13MPN	1/4"	19	56
22KAIW21MPN	1/2"	24	58
Tech Sheet 30001			



Hose Tail

2210	To Suit Hose ID mm	Hex Size mm	Length mm
22KATF06MPN	6	19	74
22KATF08MPN	8	19	74
22KATF13MPN	13	19	74
Tech Sheet 30001			

Plugs



Male Thread, BSPT

2210	Thread	Hex Size mm	Length mm
22SFAK13SXN	1/4"	14	41
22SFAK17SXN	3/8"	17	41
22SFAK21SXN	1/2"	22	46
Tech Sheet 30001			



Female Thread, BSPP

2210	Thread	Hex Size mm	Length mm
22SFIW13SXN	1/4"	17	35
22SFIW17SXN	3/8"	19	35
22SFIW21SXN	1/2"	24	38
Tech Sheet 30001			



Hose Tail

2210	To Suit Hose ID	Length mm
22SFTF06SXN	6	49
22SFTF08SXN	8	49
22SFTF10SXN	10	49
22SFTF13SXN	13	49
Tech Sheet 30001		

SERIES 23 INDUSTRIAL INTERCHANGE HIGH FLOW QUICK CONNECT AIR COUPLINGS



 **Working Temperature:**
-20°C to +100°C
Standard seal NBR

 **Maximum Static Working Pressure:**
PB 35 bar (500 PSI)



Interchangeability:
Norgren Dynaquip DC3,
Hanson 3000, Parker,
US C4109 1/4", ISO 6150

Flow Rate:
900 L/min
Material:
Brass nickel plated, NBR seal (standard series coupling).
Application:
General purpose pneumatic coupling



Profile

Couplings



Male Thread, BSPT

2310	Thread	Hex Size mm	Length mm
23KAAK13MPN	1/4"	19	60
23KAAK17MPN	3/8"	19	60
23KAAK21MPN	1/2"	22	61
Tech Sheet 511			



Female Thread, BSPT

2310	Thread	Hex Size mm	Length mm
23KAIW13MPN	1/4"	19	56
23KAIW17MPN	3/8"	19	55
23KAIW21MPN	1/2"	24	58
Tech Sheet 511			



Hose Tail

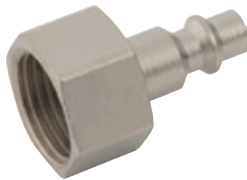
2310	To Suit Hose ID	Hex Size mm	Length mm
23KATF06MPN	6mm (1/4")	19	74
23KATF08MPN	8mm (5/16")	19	74
23KATF09MPN	9mm	19	74
23KATF10MPN	10mm (3/8")	19	74
23KATF13MPN	13mm (1/2")	19	74
Tech Sheet 511			

Plugs



Male Thread, BSPT

2310	Thread	Hex Size mm	Length mm
23SFAK10SXN	1/8"	13	39
23SFAK13SXN	1/4"	14	42
23SFAK17SXN	3/8"	17	42
23SFAK21SXN	1/2"	22	48
Tech Sheet 511			



Female Thread, BSPT

2310	Thread	Hex Size mm	Length mm
23SFIW10SXN	1/8"	14	36
23SFIW13SXN	1/4"	17	36
23SFIW17SXN	3/8"	19	36
23SFIW21SXN	1/2"	24	39
Tech Sheet 511			



Hose Tail

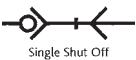
2310	To Suit Hose ID	Length mm
23SFTF06SXN	6mm (1/4")	51
23SFTF08SXN	8mm (5/16")	51
23SFTF09SXN	9mm	51
23SFTF10SXN	10mm (3/8")	51
23SFTF13SXN	13mm (1/2")	51
Tech Sheet 511		

Other materials, seals and finishes available on request, please contact our technical department for further details.

SERIES 24 QUICK COUPLING ISO 6150 B PROFILE

 **Working Temperature:**
-20°C to +100°C
Standard seal NBR

 **Maximum Static Working Pressure:**
PB 35 bar (500 PSI)



Interchangeability:
Series 23, Norgren DC3,
Hanson 3000.

Material:
Brass
Application:
General purpose pneumatic coupling



Profile

Couplings



Male Thread, BSPP

0194	Thread	Hex Size mm	Length mm
24KAAW13MPX	1/4"	22	43
24KAAW17MPX	3/8"	22	43
24KAAW21MPX	1/2"	22	46
Tech Sheet 513			



Female Thread, BSPP

0194	Thread	Hex Size mm	Length mm
24KAIW13MPX	1/4"	22	43
24KAIW17MPX	3/8"	22	43
24KAIW21MPX	1/2"	22	46
Tech Sheet 513			



Hose Tail

0194	To Suit Hose ID	Hex Size mm	Length mm
24KATF06MPX	6mm (1/4")	21	60
24KATF08MPX	8mm (5/16")	21	60
24KATF10MPX	10mm (3/8")	21	60
24KATF13MPX	13mm (1/2")	21	60
Tech Sheet 513			

Plugs



Male Thread, BSPT

2310	Thread	Hex Size mm	Length mm
23SFAK10SXN	1/8"	13	39
23SFAK13SXN	1/4"	14	42
23SFAK17SXN	3/8"	17	42
23SFAK21SXN	1/2"	22	48
Tech Sheet 513			



Female Thread, BSPT

2310	Thread	Hex Size mm	Length mm
23SFIW10SXN	1/8"	14	36
23SFIW13SXN	1/4"	17	36
23SFIW17SXN	3/8"	19	36
23SFIW21SXN	1/2"	24	39
Tech Sheet 513			



Hose Tail

2310	To Suit Hose ID	Length mm
23SFTF06SXN	6mm (1/4")	51
23SFTF08SXN	8mm (5/16")	51
23SFTF09SXN	9mm	51
23SFTF10SXN	10mm (3/8")	51
23SFTF13SXN	13mm (1/2")	51
Tech Sheet 513		

Other materials, seals and finishes available on request, please contact our technical department for further details.

SERIES 25 QUICK COUPLING EUROPEAN PROFILE



 **Working Temperature:**
-20°C to +100°C
Standard seal NBR

 **Maximum Static Working Pressure:**
PB 35 bar (500 PSI)



Interchangeability:
Rectus 26, 1600, 1625,
JWL 520, 530.

Flow Rate:
1800 L/min

Material:
Brass nickel plated
Application:
General purpose pneumatic coupling
Euro standard design.

ULTRA-FLO »»



Profile

Couplings



Male Thread, BSPT

2510	Thread	Hex Size mm	Length mm
25KAAK13MPN	1/4"	19	60
25KAAK17MPN	3/8"	19	60
25KAAK21MPN	1/2"	22	61

Tech Sheet 514



Female Thread, BSPP

2510	Thread	Hex Size mm	Length mm
25KAIW13MPN	1/4"	19	56
25KAIW17MPN	3/8"	19	55
25KAIW21MPN	1/2"	24	58

Tech Sheet 514



Hose Tail

2510	To Suit Hose ID	Hex Size mm	Length mm
25KATF06MPN	6mm (1/4")	19	74
25KATF08MPN	8mm (5/16")	19	74
25KATF09MPN	9mm	19	74
25KATF10MPN	10mm (3/8")	19	74
25KATF13MPN	13mm (1/2")	19	74

Tech Sheet 514



Quick Fit Tube Connection

2510	To Suit Tube mm	Hex Size mm	Length mm
25KAKO08MPN	6 x 8	19	60

Tech Sheet 514



Panel Mount, Standard Hose Tail

2510	To Suit Hose ID	Hex Size mm	Length mm
25KATS08MPN	8mm (5/16")	19	80
25KATS10MPN	10mm (3/8")	19	87

Tech Sheet 514



Quick Fit Tube Connection with Spring Guard

2510	To Suit Tube mm	Hex Size mm	Length mm
25KAKK08MPN	6 x 8	19	144
25KAKK10MPN	8 x 10	19	155

Tech Sheet 514

Other materials, seals and finishes available on request, please contact our technical department for further details.

SERIES 25 QUICK COUPLING EUROPEAN PROFILE



Working Temperature:
-20°C to +100°C
Standard seal NBR

Maximum Static Working Pressure:
PB 35 bar (500 PSI)

Interchangeability:
Rectus design

Material:
Steel zinc plated
Application:
General purpose pneumatic coupling

Plugs



Male Thread, BSPT

2510	Thread	Hex Size mm	Length mm
25SFAK10SXN	1/8"	13	33
25SFAK13SXN	1/4"	14	37
25SFAK17SXN	3/8"	17	37
25SFAK21SXN	1/2"	22	43
Tech Sheet 514			



Female Thread, BSPP

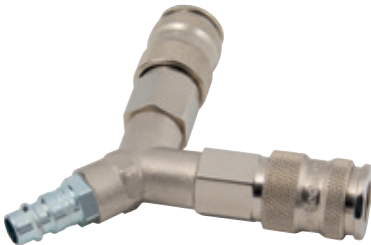
2510	Thread	Hex Size mm	Length mm
25SFIW10SXN	1/8"	14	30
25SFIW13SXN	1/4"	17	38.5
25SFIW17SXN	3/8"	19	39.5
25SFIW21SXN	1/2"	24	44
Tech Sheet 514			



Hose Tail

2510	To Suit Hose ID	Length mm
25SFTF06SXN	6mm (1/4")	48
25SFTF08SXN	8mm (5/16")	48
25SFTF09SXN	9mm	48
25SFTF10SXN	10mm (3/8")	48
25SFTF13SXN	13mm (1/2")	48
Tech Sheet 514		

Y Connector



2 x Coupling Outlets, 1 x Plug Inlet

2510	Length mm
25Y	114
Tech Sheet 514	

Triple Outlet Connectors



3 x Coupling Outlets, 1 x 3/8" BSPP Inlet

2510	Length mm
25W	119
Tech Sheet 514	



3 x Coupling Outlets, 1 x 1/4" BSPP Inlet

2510	Length mm
M3-25	
Tech Sheet 514	



For **Compressors**
see page **1699-1703**



Other materials, seals and finishes available on request, please contact our technical department for further details.

SERIES 25 QUICK COUPLING EUROPEAN PROFILE



Free Angle Rotating Joint



Male Thread, BSPT, Steel Nickel Plated

2510	Thread
25FAAK13SPN	1/4"



Male Thread x Female Thread, BSPP, Steel Nickel Plated

2510	Thread
FA13A13ISPN	1/4"
FA17A17ISPN	3/8"

Leader Hoses

A 'Leader Hose' is a length of flexible hose which should be fitted between a air tool and the connecting coupling. By absorbing the impact of a pneumatic impact tool, a leader hose will significantly increase the life expectancy of the coupling.



3/8" Bore Rubber-Tech Hose, Series 25 Plug x Male Thread, BSPT

2510	Thread	Length mm
LH25/13K	1/4"	381
LH25/17K	3/8"	381

WARNING – Leader Hoses



The Health and Safety Executive guide states - "the plug should not be screwed directly into the inlet port, but should be fitted onto a short isolation hose, thus isolating the plug and coupling from the tool vibration".

Flexible Connectors

This rotating joint, when installed between the airline and hand tool, reduces operator wrist and elbow strain. It also acts as a universal joint and prevents kinks appearing in the airline.



Male Thread, BSP x Female Thread, BSPP

0560	Male Thread	Female Thread
FC04	1/4"	1/4"



Male Thread, BSPT x Female Thread, BSPP

0560	Male Thread	Female Thread
FE101	1/4"	1/4"

Recoil Eliminator (Anti-Whip)



Hose Tail, Steel Nickel Plated

2510	To Suit Hose ID	Hex Size mm	Length mm
25SRTF10SXN	10mm (3/8")	21	60

Other materials, seals and finishes available on request, please contact our technical department for further details.

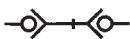
SERIES 25 QUICK COUPLING EUROPEAN PROFILE



Working Temperature:
-20°C to +100°C
Standard seal NBR



Maximum Static Working Pressure:
PB 35 bar (500 PSI)



Double Shut Off

Interchangeability:
Rectus design

Material:
Brass, NBR seal (standard series coupling).
Application:
General purpose pneumatic coupling, double shut off,
Rectus Ultra-Flo valve.



Profile

Couplings



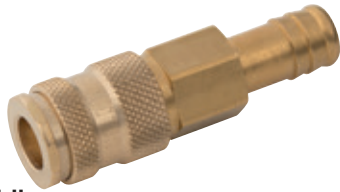
Male Thread, BSPT

2510	Thread	Hex Size mm	Length mm
25KBAK13BPX	1/4"	19	60
25KBAK17BPX	3/8"	19	59
25KBAK21BPX	1/2"	22	57.5
Tech Sheet 515			



Female Thread, BSPP

2510	Thread	Hex Size mm	Length mm
25KBIW13BPX	1/4"	19	56
25KBIW17BPX	3/8"	19	55
25KBIW21BPX	1/2"	24	58
Tech Sheet 515			



Hose Tail

2510	To Suit Hose ID	Hex Size mm	Length mm
25KBTf06BPX	6mm (1/4")	19	74
25KBTf08BPX	8mm (5/16")	19	74
25KBTf10BPX	10mm (3/8")	19	74
25KBTf13BPX	13mm (1/2")	19	74
Tech Sheet 515			

Plugs



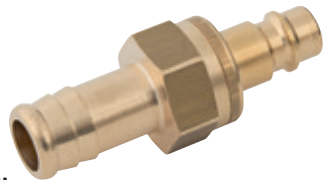
Male Thread, BSPP

2510	Thread	Hex Size mm	Length mm
25SBAW13MPX	1/4"	22	43
25SBAW17MPX	3/8"	22	43
25SBAW21MPX	1/2"	22	46
Tech Sheet 515			



Female Thread, BSPP

2510	Thread	Hex Size mm	Length mm
25SBIW13MPX	1/4"	22	43
25SBIW17MPX	3/8"	22	43
25SBIW21MPX	1/2"	22	46
Tech Sheet 515			



Hose Tail

2510	To Suit Hose ID	Hex Size mm	Length mm
25SBTF06MPX	6mm (1/4")	21	60
25SBTF08MPX	8mm (5/16")	21	60
25SBTF10MPX	10mm (3/8")	21	60
25SBTF13MPX	13mm (1/2")	21	60
Tech Sheet 515			

Other materials, seals and finishes available on request, please contact our technical department for further details.

SERIES 1600 SAFETY QUICK COUPLING SELF VENTING



 **Working Temperature:**
-20°C to +100°C
Standard seal NBR

 **Maximum Static Working Pressure:**
PB 12 bar (174 PSI)



Single Shut Off

Interchangeability:
Rectus design

Material:
Steel nickel plated

Application:
General purpose pneumatic coupling self-venting safety
feature EN 983, ISO 4414, ISO 6150.

New updated version of the 25KE self venting couplings. Still interchangeable with original 25 Series couplings.



Profile

Couplings



Male Thread, BSPP

0194	Thread	Hex Size mm	Length mm
1600KEAK13SPN	1/4"	19	64.5

Tech Sheet 60256



Female Thread, BSPP

0194	Thread	Hex Size mm	Length mm
1600KEIW13SPN	1/4"	19	59
1600KEIW17SPN	3/8"	19	59
1600KEIW21SPN	1/2"	24	61.5

Tech Sheet 60256



Hose Tail

0194	To Suit Hose ID	Hex Size mm	Length mm
1600KETF09SPN	9mm	19	79.5
1600KETF10SPN	10mm (3/8")	19	79.5
1600KETF13SPN	13mm (1/2")	19	79.5

Tech Sheet 60256

Plugs



Male Thread, BSPT, Steel Nickel Plated

2510	Thread	Hex Size mm	Length mm
25SFAK10SXN	1/8"	13	33
25SFAK13SXN	1/4"	14	37
25SFAK17SXN	3/8"	17	37
25SFAK21SXN	1/2"	22	43

Tech Sheet 514



Female Thread, BSPP, Steel Nickel Plated

2510	Thread	Hex Size mm	Length mm
25SFIW10SXN	1/8"	14	30
25SFIW13SXN	1/4"	17	38.5
25SFIW17SXN	3/8"	19	39.5
25SFIW21SXN	1/2"	24	44

Tech Sheet 514



Hose Tail, Steel Nickel Plated

2510	To Suit Hose ID	Length mm
25SFTF06SXN	6mm (1/4")	48
25SFTF08SXN	8mm (5/16")	48
25SFTF09SXN	9mm	48
25SFTF10SXN	10mm (3/8")	48
25SFTF13SXN	13mm (1/2")	48

Tech Sheet 514

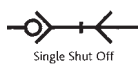
Other materials, seals and finishes available on request, please contact our technical department for further details.

SERIES 25 PREMIUM CODED QUICK COUPLING



Working Temperature:
-20°C to +100°C
Standard seal NBR

Maximum Static Working Pressure:
PB 35 bar (500 PSI)



Interchangeability:
Rectus design

Application:
Non-interchangeable, each coupling and plug has an individual shape so they can only be connected to each other, colour coded, one hand operation.



Profile

Couplings



Male Thread, BSPP

2510	Colour	Thread	Length mm
25KAAW13BPX6	Blue	1/4"	60
25KAAW13BPX8	Red	1/4"	60
25KAAW17BPX6	Blue	3/8"	60
25KAAW17BPX8	Red	3/8"	60
25KAAW21BPX8	Red	1/2"	61
Tech Sheet 517			



Female Thread, BSPP

2510	Colour	Thread	Length mm
25KAIW13BPX0	Green	1/4"	55
25KAIW13BPX3	Brown	1/4"	55
25KAIW13BPX6	Blue	1/4"	55
25KAIW13BPX8	Red	1/4"	55
25KAIW17BPX6	Blue	3/8"	55
25KAIW17BPX8	Red	3/8"	55
25KAIW21BPX3	Brown	1/2"	58
25KAIW21BPX6	Blue	1/2"	58
25KAIW21BPX8	Red	1/2"	58
Tech Sheet 517			



Hose Tail

2510	Colour	To Suit Hose ID mm	Length mm
25KATF06BPX3	Brown	6	74
25KATF06BPX6	Blue	6	74
25KATF06BPX8	Red	6	74
25KATF09BPX6	Blue	9	74
25KATF09BPX8	Red	9	74
Tech Sheet 517			

Plugs



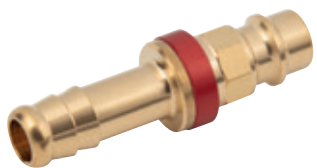
Male Thread, BSPP

2510	Colour	Thread	Length mm
25SFAW13MXX6	Blue	1/4"	37
25SFAW13MXX8	Red	1/4"	37
25SFAW17MXX6	Blue	3/8"	37
Tech Sheet 517			



Female Thread, BSPP

2510	Colour	Thread	Length mm
25SFIW13MXX0	Green	1/4"	33
25SFIW13MXX3	Brown	1/4"	33
25SFIW13MXX6	Blue	1/4"	33
25SFIW13MXX8	Red	1/4"	33
25SFIW17MXX0	Green	3/8"	33
25SFIW17MXX6	Blue	3/8"	33
25SFIW17MXX8	Red	3/8"	33
Tech Sheet 517			



Hose Tail

2510	Colour	To Suit Hose ID mm	Length mm
25SFTF09MXX6	Blue	9	50.5
25SFTF09MXX8	Red	9	50.5
Tech Sheet 517			

Other materials, seals and finishes available on request, please contact our technical department for further details.

SERIES 25 SAFETY QUICK COUPLING PARKER PROFILE SAFETY LOCK



 **Working Temperature:**
-20°C to +100°C
Standard seal NBR

 **Maximum Static Working Pressure:**
PB 35 bar (500 PSI)



Interchangeability:
Rectus design

Material:
Coupling: Steel nickel plated. NBR seal (standard series coupling).
Plug: Steel zinc plated.
Application:
Two-handed disconnection prevents accidental disconnection.
The coupling and plug must firstly be pushed together before the sleeve is pulled back.



Profile

Couplings



Male Thread, BSPT

2510	Thread	Hex Size mm	Length mm
25KSAK13SPN	1/4"	19	60
Tech Sheet 519			



Hose Tail

2510	To Suit Hose ID	Hex Size mm	Length mm
25KSTF10SPN	10mm (3/8")	19	74
25KSTF13SPN	13mm (1/2")	19	74
Tech Sheet 519			

Plugs



Male Thread, BSPT

2510	Thread	Hex Size mm	Length mm
25SSAK13SXN	1/4"	14	37
25SSAK17SXN	3/8"	17	37
25SSAK21SXN	1/2"	22	43
Tech Sheet 519			



Female Thread, BSPP

2510	Thread	Hex Size mm	Length mm
25SSIW13SXN	1/4"	17	33
25SSIW17SXN	3/8"	19	33
Tech Sheet 519			



Hose Tail

2510	To Suit Hose ID	Length mm
25SSTF08SXN	8mm (5/16")	48
25SSTF10SXN	10mm (3/8")	48
25SSTF13SXN	13mm (1/2")	48
Tech Sheet 519		

Other materials, seals and finishes available on request, please contact our technical department for further details.

SERIES 25 QUICK COUPLING EUROPEAN PROFILE STAINLESS STEEL



Working Temperature:
-15°C to +200°C
Standard seal FKM

Maximum Static Working Pressure:
PB 35 bar (500 PSI)

Single Shut Off

Interchangeability:
Rectus 26

Material:
Stainless steel coupling and plug

Application:
General purpose pneumatic coupling, stainless steel.



Profile

Couplings



Male Thread, BSPP

2510	Thread	Hex Size mm	Length mm
25KAAW13RVX	1/4"	19	59
25KAAW17RVX	3/8"	19	57.5
Tech Sheet 518			



Female Thread, BSPP

2510	Thread	Hex Size mm	Length mm
25KAIW13RVX	1/4"	19	56
25KAIW17RVX	3/8"	19	55
25KAIW21RVX	1/2"	24	56
Tech Sheet 518			



Hose Tail

2510	To Suit Hose ID	Hex Size mm	Length mm
25KATF10RVX	10mm (3/8")	19	74
25KATF13RVX	13mm (1/2")	19	74
Tech Sheet 518			

Plugs



Male Thread, BSPP

2510	Thread	Hex Size mm	Length mm
25SFAW13RXX	1/4"	17	33.5
25SFAW17RXX	3/8"	19	33
25SFAW21RXX	1/2"	24	38
Tech Sheet 518			



Female Thread, BSPP

2510	Thread	Hex Size mm	Length mm
25SFIW13RXX	1/4"	17	38.5
25SFIW17RXX	3/8"	19	39.5
25SFIW21RXX	1/2"	24	44
Tech Sheet 518			



Hose Tail

2510	To Suit Hose ID	Length mm
25SFTF06RXX	6mm (1/4")	48
25SFTF08RXX	8mm (5/16")	48
25SFTF10RXX	10mm (3/8")	48
25SFTF13RXX	13mm (1/2")	48
Tech Sheet 518		

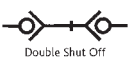
Other materials, seals and finishes available on request, please contact our technical department for further details.

SERIES 25 SAFETY QUICK COUPLING PARKER PROFILE SAFETY LOCKING



 **Working Temperature:**
-20°C to +100°C
Standard seal NBR

 **Maximum Static Working Pressure:**
PB 35 bar (500 PSI)



Interchangeability:
Rectus design

Flow Rate:
Double valved 710 L/min

Material:
Brass nickel plated

Application:
General purpose pneumatic coupling



Profile

ULTRA-FLO »

Couplings (Steel sleeve)



Male Thread, BSPT

2510	Thread	Hex Size mm	Length mm
25KDAK13BPNS	1/4"	19	60



Female Thread, BSPP

2510	Thread	Hex Size mm	Length mm
25KDIW13BPNS	1/4"	19	56
25KDIW21BPNS	1/2"	24	58



Hose Tail

2510	To Suit Hose ID	Hex Size mm	Length mm
25KDTF08BPNS	8mm (5/16")	19	74

Plugs (Valved)



Male Thread, BSPP

2510	Thread	Hex Size mm	Length mm
25SDAW13MPN	1/4"	22	43
25SDAW17MPN	3/8"	22	43
25SDAW21MPN	1/2"	22	46



Female Thread, BSPP

2510	Thread	Hex Size mm	Length mm
25SDIW13MPN	1/4"	22	43
25SDIW17MPN	3/8"	22	43
25SDIW21MPN	1/2"	24	46



Hose Tail

2510	To Suit Hose ID	Hex Size mm	Length mm
25SDTF08MPN	8mm (5/16")	21	60
25SDTF10MPN	10mm (3/8")	21	60
25SDTF13MPN	13mm (1/2")	21	60

Other materials, seals and finishes available on request, please contact our technical department for further details.

SERIES 26 QUICK COUPLING EUROPEAN PROFILE



Working Temperature:
-20°C to +100°C
Standard seal NBR

Maximum Static Working Pressure:
PB 35 bar (500 PSI)

Single Shut Off

Interchangeability:
Festo KD Series

Material:
Brass

Application:
General purpose pneumatic coupling



Profile

Couplings



Male Thread, BSPP

2610	Thread	Hex Size mm	Length mm
26KAAW10MPX	1/8"	22	43
26KAAW13MPX	1/4"	22	39
26KAAW17MPX	3/8"	22	41
26KAAW21MPX	1/2"	22	44
Tech Sheet 520			



Female Thread, BSPP

2610	Thread	Hex Size mm	Length mm
26KAIW13MPX	1/4"	22	41
26KAIW17MPX	3/8"	22	41
26KAIW21MPX	1/2"	24	44
Tech Sheet 520			



Hose Tail

2610	To Suit Hose ID	Hex Size mm	Length mm
26KATF06MPX	6mm (1/4")	21	58
26KATF08MPX	8mm (5/16")	21	58
26KATF09MPX	9mm	21	58
26KATF10MPX	10mm (3/8")	21	58
26KATF13MPX	13mm (1/2")	21	58
Tech Sheet 520			

Plugs



Male Thread, BSPP

2610	Thread	Hex Size mm	Length mm
25SFAW10MXX	1/8"	14	31
25SFAW13MXX	1/4"	17	33
25SFAW17MXX	3/8"	19	33
25SFAW21MXX	1/2"	24	38
Tech Sheet 520			



Female Thread, BSPP

2610	Thread	Hex Size mm	Length mm
25SFIW10MXX	1/8"	14	30
25SFIW13MXX	1/4"	17	33
25SFIW17MXX	3/8"	19	33
25SFIW21MXX	1/2"	24	35
Tech Sheet 520			



Hose Tail

2610	To Suit Hose ID	Length mm
25SFTF06MXX	6mm (1/4")	48
25SFTF08MXX	8mm (5/16")	48
25SFTF09MXX	9mm	48
25SFTF10MXX	10mm (3/8")	48
25SFTF13MXX	13mm (1/2")	48
Tech Sheet 520		

Y Connector



2 x Coupling Outlets, 1 x Plug Inlet

2610	Length mm
26Y	90
Tech Sheet 520	

Triple Outlet Connector



3 x Coupling Outlets, 1 x 3/8" BSPP Inlet

2610	Length mm
26W	96
Tech Sheet 520	

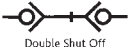
Other materials, seals and finishes available on request, please contact our technical department for further details.

SERIES 26 QUICK COUPLING EUROPEAN PROFILE



Working Temperature:
-20°C to +100°C
Standard seal NBR

Maximum Static Working Pressure:
PB 35 bar (500 PSI)



Interchangeability:
Rectus design

Material:
Brass
Application:
General purpose pneumatic coupling



Profile

Couplings



Male Thread, BSPP

2610	Thread	Hex Size mm	Length mm
26KBAW13MPX	1/4"	22	39
26KBAW17MPX	3/8"	22	41
26KBAW21MPX	1/2"	24	42
Tech Sheet 520			



Female Thread, BSPP

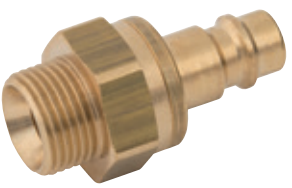
2610	Thread	Hex Size mm	Length mm
26KBIW13MPX	1/4"	22	41
26KBIW17MPX	3/8"	22	41
26KBIW21MPX	1/2"	24	44
Tech Sheet 520			



Hose Tail

2610	To Suit Hose ID	Hex Size mm	Length mm
26KBTf06MPX	6mm (1/4")	21	58
26KBTf08MPX	8mm (5/16")	21	58
26KBTf10MPX	10mm (3/8")	21	58
26KBTf13MPX	13mm (1/2")	21	58
Tech Sheet 520			

Plugs



Male Thread, BSPP

2510	Thread	Hex Size mm	Length mm
25SBAW13MPX	1/4"	22	43
25SBAW17MPX	3/8"	22	43
25SBAW21MPX	1/2"	22	46
Tech Sheet 520			



Female Thread, BSPP

2510	Thread	Hex Size mm	Length mm
25SBIW13MPX	1/4"	22	43
25SBIW17MPX	3/8"	22	43
25SBIW21MPX	1/2"	22	46
Tech Sheet 520			



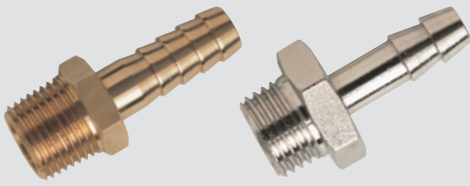
Hose Tail

2510	To Suit Hose ID	Hex Size mm	Length mm
25SBTF06MPX	6mm (1/4")	21	60
25SBTF08MPX	8mm (5/16")	21	60
25SBTF10MPX	10mm (3/8")	21	60
25SBTF13MPX	13mm (1/2")	21	60
Tech Sheet 520			

Other materials, seals and finishes available on request, please contact our technical department for further details.



For **Brass & Nickel Plated Brass** Hose Tails
see pages **1140-1146**



SERIES 26 SAFETY QUICK COUPLING EUROPEAN PROFILE SELF VENTING

 **Working Temperature:**
-20°C to +60°C
Standard seal nitrile

 **Maximum Static Working Pressure:**
PB 12 bar (174 PSI)



Interchangeability:
Rectus design



EN 983
ISO 4414
ISO 6150

Material:
Brass nickel plated, nitrile seal

Application:
General purpose pneumatic coupling self-venting safety feature.



Profile

Couplings



Male Thread, BSPP

2610	Thread	Hex Size mm	Length mm
26KEAW13MPN	1/4"	22	55
26KEAW17MPN	3/8"	22	55
26KEAW21MPN	1/2"	24	58
Tech Sheet 10281			



Female Thread, BSPP

2610	Thread	Hex Size mm	Length mm
26KEIW13MPN	1/4"	22	57
26KEIW17MPN	3/8"	22	57
26KEIW21MPN	1/2"	24	60
Tech Sheet 10281			



Hose Tail

2610	To Suit Hose ID	Hex Size mm	Length mm
26KETFO6MPN	6mm (1/4")	22	71
26KETFO8MPN	8mm (5/16")	22	71
26KETFO9MPN	9mm	22	71
26KETF10MPN	10mm (3/8")	22	71
26KETF13MPN	13mm (1/2")	22	71
Tech Sheet 10281			

Plugs



Male Thread, BSPT, Steel Nickel Plated

2510	Thread	Hex Size mm	Length mm
25SFAK10SXN	1/8"	13	33
25SFAK13SXN	1/4"	14	37
25SFAK17SXN	3/8"	17	37
25SFAK21SXN	1/2"	22	43
Tech Sheet 514			



Female Thread, BSPP, Steel Nickel Plated

2510	Thread	Hex Size mm	Length mm
25SFIW10SXN	1/8"	14	30
25SFIW13SXN	1/4"	17	38.5
25SFIW17SXN	3/8"	19	39.5
25SFIW21SXN	1/2"	24	44
Tech Sheet 514			



Hose Tail, Steel Nickel Plated

2510	To Suit Hose ID	Length mm
25SFTF06SXN	6mm (1/4")	48
25SFTF08SXN	8mm (5/16")	48
25SFTF09SXN	9mm	48
25SFTF10SXN	10mm (3/8")	48
25SFTF13SXN	13mm (1/2")	48
Tech Sheet 514		

Other materials, seals and finishes available on request, please contact our technical department for further details.

SERIES 26 SAFETY PUSH BUTTON QUICK COUPLING ISO 6150 B ISO 6150 C & EUROPEAN SELF VENTING



Working Temperature:
-20°C up to +100°C

Maximum Working Pressure:
12 bar



Profile:

Euro Profile

Interchangeability:

Rectus 25, 1600/1625, JWL 520 and 530.

Material:

Anodised aluminium, brass nickel plated.

Application:

Parker's Safety Quick Coupling Series KP is a safety coupling with pushing button integrating self-venting system according to ISO 6150 B, ISO 6150 and EURO. The self-venting takes place during disconnection in 2 steps - no risk of pressurised hoses being tossed around. When the pushing button is pressed one time, the plug is released yet remains locked in. The coupling valve closes and the air is vented from the air line at the same time. Only then, by pressing the button again, can uncoupling take place safely. The system fulfils the requirements of ISO 4414 - increased safety standards in the work place and make the use easy.

The right plug for self-venting series KP can be found as follows:

- ISO 6150 B; DN 5,5: Plug series 23
- ISO 6150 B; DN 8: Plug series 30
- ISO 6150 C; DN 5,5: Plug series 18
- ISO 6150 B; DN 8: Plug series 84
- EURO; DN 7,4: Plug series 25

Nominal Diameter:

7.4mm

Flow Rate:

1225 L/min (6 bar, dP 0.5 bar)



Profile

Couplings



Male Thread, BSPP

2610	Thread	Hex Size mm	Length mm
26KPAW13APX	1/4"	22	72
26KPAW17APX	3/8"	22	72
26KPAW21APX	1/2"	22	75

Tech Sheet 110818



Female Thread, BSPP

2610	Thread	Hex Size mm	Length mm
26KPIW13APX	1/4"	22	70.5
26KPIW17APX	3/8"	22	72.5
26KPIW21APX	1/2"	22	74.5

Tech Sheet 110818



Hose Tail

2610	Thread	Hex Size mm	Length mm
26KPTF06APX	6	22	85.5
26KPTF08APX	8	22	85.5
26KPTF10APX	10	22	85.5
26KPTF13APX	13	22	85.5

Tech Sheet 110818



For **Rubber Alloy Hose Assemblies**
see page 1411



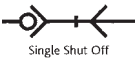
SERIES 27 QUICK COUPLING EUROPEAN PROFILE



Working Temperature:
Couplings:
-20°C to +100°C
Standard seal NBR



Maximum Static Working Pressure:
PB 35 bar (500 PSI)



Interchangeability:
Rectus 41, 100, 1727.

Material:
Brass, nickel plated, NBR seal (standard series) coupling.
Application:
General purpose high-flo pneumatic
Coupling self venting safety feature
Machinery construction, trade and automotive.



Profile

Couplings



Male Thread, BSPT

2710	Thread	Hex Size mm	Length mm
27KAAK13MPN	1/4"	24	63
27KAAK17MPN	3/8"	24	63
27KAAK21MPN	1/2"	24	65
27KAAK26MPN	3/4"	27	65

Tech Sheet 521



Female Thread, BSPP

2710	Thread	Hex Size mm	Length mm
27KAIW13MPN	1/4"	24	56
27KAIW17MPN	3/8"	24	56
27KAIW21MPN	1/2"	24	56
27KAIW26MPN	3/4"	27	60

Tech Sheet 521



Hose Tail

2710	To Suit Hose ID	Hex Size mm	Length mm
27KATF06MPN	6mm (1/4")	24	76
27KATF09MPN	9mm	24	76
27KATF10MPN	10mm (3/8")	24	76
27KATF13MPN	13mm (1/2")	24	76
27KATF16MPN	16mm (5/8")	24	76
27KATF19MPN	19mm (3/4")	24	76

Tech Sheet 521



For **Parker LF3000® Push-In**
see page **793**



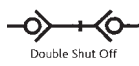
Other materials, seals and finishes available on request, please contact our technical department for further details.

SERIES 27 QUICK COUPLING EUROPEAN PROFILE



Working Temperature:
-20°C to +100°C
Standard seal NBR

Maximum Static Working Pressure:
PB 35 bar (500 PSI)



Interchangeability:
Rectus design

Material:
Brass
Application:
General purpose high-flo pneumatic couplin



Profile

Couplings



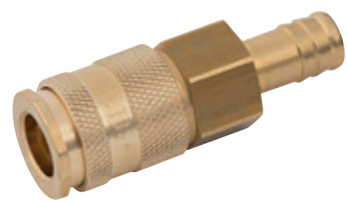
Male Thread, BSPT

0194	Thread	Hex Size mm	Length mm
27KBAK21BPX	1/2"	24	65
Tech Sheet 522			



Female Thread, BSPP

0194	Thread	Hex Size mm	Length mm
27KBIW17BPX	3/8"	24	56
27KBIW21BPX	1/2"	24	56
27KBIW26BPX	3/4"	32	60
Tech Sheet 522			



Hose Tail

0194	To Suit Hose ID mm	Hex Size mm	Length mm
27KBTf10BPX	10mm (3/8")	24	76
27KBTf13BPX	13mm (1/2")	24	76
27KBTf19BPX	19mm (3/4")	24	76
Tech Sheet 522			

Plugs



Male Thread, BSPT

0194	Thread	Hex Size mm	Length mm
27SBAK21MPX	1/2"	24	62.5
27SBAK26MPX	3/4"	27	62.5
Tech Sheet 522			



Female Thread, BSPP

0194	Thread	Hex Size mm	Length mm
27SBIW21MPX	1/2"	24	54.5
Tech Sheet 522			



Hose Tail

0194	To Suit Hose ID	Hex Size mm	Length mm
27SBTF13MPX	13mm (1/2")	24	74
Tech Sheet 522			

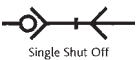
Other materials, seals and finishes available on request, please contact our technical department for further details.

SERIES 1700 SAFETY QUICK COUPLING SELF VENTING



Working Temperature:
-20°C to +100°C
Standard seal NBR

Maximum Static Working Pressure:
PB 12 bar (174 PSI)



Material:
Brass, nickel plated, NBR seal
(standard series) coupling.

Application:
General purpose pneumatic coupling self venting
safety feature.
Machinery construction, trade and automotive.

New updated version of the 27KE self venting couplings.
Still interchangeable with original 27 Series couplings.



Profile

Couplings



Male Thread, BSPT

0194	Thread	Hex Size mm	Length mm
1700KEAW17SPN	3/8"	24	67
1700KEAW21SPN	1/2"	24	70
1700KEAW26SPN	3/4"	30	74

Tech Sheet 60257



Female Thread, BSPP

0194	Thread	Hex Size mm	Length mm
1700KEIW17SPN	3/8"	24	64.5
1700KEIW21SPN	1/2"	24	68
1700KEIW26SPN	3/4"	32	74

Tech Sheet 60257

Plugs



Male Thread, BSPT

2710	Thread	Hex Size mm	Length mm
27SFAK13SXN	1/4"	17	40
27SFAK17SXN	3/8"	17	40
27SFAK21SXN	1/2"	22	45
27SFAK26SXN	3/4"	27	48

Tech Sheet 60257



Female Thread, BSPP

2710	Thread	Hex Size mm	Length mm
27SFIW13SXN	1/4"	17	33
27SFIW17SXN	3/8"	19	33
27SFIW21SXN	1/2"	24	37
27SFIW26SXN	3/4"	32	42

Tech Sheet 60257



Hose Tail

2710	To Suit Hose ID	Length mm
27SFTF06SXN	6mm (1/4")	48
27SFTF09SXN	9mm	48
27SFTF10SXN	10mm (3/8")	48
27SFTF13SXN	13mm (1/2")	48
27SFTF16SXN	16mm (5/8")	48
27SFTF19SXN	19mm (3/4")	48

Tech Sheet 60257

Other materials, seals and finishes available on request, please contact our technical department for further details.

SERIES 30 QUICK COUPLING ISO 6150 B PROFILE



 **Working Temperature:**
-20°C to +100°C
Standard seal NBR

 **Maximum Static Working Pressure:**
PB 35 bar (500 PSI)



Interchangeability:
US-MIL-SPEC-C-4109
ISO 6150B, Gromelle 900 Aro,
Hansen 4000, Parker 30 3/8"

Material:
Brass, nickel plated, NBR seal (standard series) coupling.
Application:
General purpose pneumatic coupling, machinery
construction, trade and automotive.



Profile

Couplings



Male Thread, BSPP

3710	Thread	Hex Size mm	Length mm
30KAAW13SPN	1/4"	22	49
30KAAW17SPN	3/8"	22	49
30KAAW21SPN	1/2"	22	52
Tech Sheet 800			



Female Thread, BSPP

3710	Thread	Hex Size mm	Length mm
30KAIW13SPN	1/4"	22	49
30KAIW17SPN	3/8"	22	49
30KAIW21SPN	1/2"	22	52
Tech Sheet 800			



Hose Tail

3710	To Suit Hose ID	Hex Size mm	Length mm
30KATF08SPN	8mm (5/16")	21	66
30KATF10SPN	10mm (3/8")	21	66
Tech Sheet 800			

Plugs



Male Thread, BSPP

3710	Thread	Hex Size mm	Length mm
30SFAW13SXN	1/4"	17	42
30SFAW17SXN	3/8"	19	42
30SFAW21SXN	1/2"	24	46
Tech Sheet 800			



Female Thread, BSPP

3710	Thread	Hex Size mm	Length mm
30SFIW13SXN	1/4"	17	40
30SFIW17SXN	3/8"	19	42
30SFIW21SXN	1/2"	24	43
Tech Sheet 800			



Hose Tail

3710	To Suit Hose ID	Length mm
30SFTF06SXN	6mm (1/4")	55
30SFTF08SXN	8mm (5/16")	55
30SFTF10SXN	10mm (3/8")	55
30SFTF13SXN	13mm (1/2")	55
Tech Sheet 800		

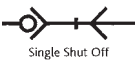
Other materials, seals and finishes available on request, please contact our technical department for further details.

SERIES 33 QUICK COUPLING ATLAS COPCO PROFILE



Working Temperature:
-20°C to +100°C
Standard seal nitrile

Maximum Static Working Pressure:
PB 35 bar (500 PSI)



Interchangeability:
Atlas QIC 10

Material:
Steel nickel plated, nitrile seal
Application:
General purpose high-flo pneumatic coupling



Profile

Couplings



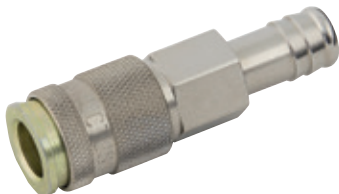
Male Thread, BSPT

3310	Thread	Hex Size mm	Length mm
33KAAK13SPN	1/4"	19	60
33KAAK17SPN	3/8"	19	59
33KAAK21SPN	1/2"	22	60
Tech Sheet 523			



Female Thread, BSPP

3310	Thread	Hex Size mm	Length mm
33KAIW13SPN	1/4"	19	55
33KAIW17SPN	3/8"	19	54
33KAIW21SPN	1/2"	24	57
Tech Sheet 523			



Hose Tail

3310	To Suit Hose ID	Hex Size mm	Length mm
33KATF06SPN	6mm (1/4")	19	73
33KATF08SPN	8mm (5/16")	19	73
33KATF13SPN	13mm (1/2")	19	73
Tech Sheet 523			

Plugs



Male Thread, BSPT

3310	Thread	Hex Size mm	Length mm
33SFAK13SXN	1/4"	14	42
33SFAK17SXN	3/8"	17	42
33SFAK21SXN	1/2"	22	47
Tech Sheet 523			



Female Thread, BSPP

3310	Thread	Hex Size mm	Length mm
33SFIW13SXN	1/4"	17	37
33SFIW17SXN	3/8"	17	37
33SFIW21SXN	1/2"	24	42
Tech Sheet 523			



Hose Tail

3310	To Suit Hose ID	Length mm
33SFTF06SXN	6mm (1/4")	52
33SFTF08SXN	8mm (5/16")	52
33SFTF10SXN	10mm (3/8")	52
33SFTF13SXN	13mm (1/2")	52
Tech Sheet 523		

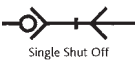
Other materials, seals and finishes available on request, please contact our technical department for further details.

SERIES 34 QUICK COUPLING ATLAS COPCO PROFILE



 **Working Temperature:**
-20°C to +100°C
Standard seal NBR

 **Maximum Static Working Pressure:**
PB 35 bar (500 PSI)



Interchangeability:
Atlas Copco QIC 15

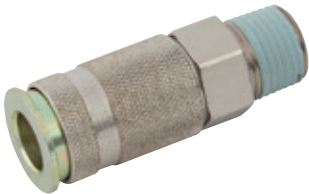
Material:
Steel nickel plated, nitrile seal
Application:
General purpose pneumatic coupling



Profile

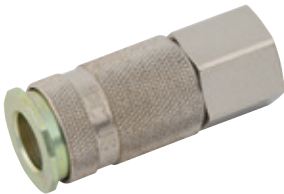
ULTRA-FLO »»

Couplings



Male Thread, BSPT

3310	Thread	Hex Size mm	Length mm
34KAAK17SPN	3/8"	24	70
34KAAK21SPN	1/2"	24	72
34KAAK26SPN	3/4"	27	72
Tech Sheet 524			



Female Thread, BSPP

3310	Thread	Hex Size mm	Length mm
34KAIW21SPN	1/2"	24	64
34KAIW26SPN	3/4"	32	68
Tech Sheet 524			



Hose Tail

3310	To Suit Hose ID	Hex Size mm	Length mm
34KATF10SPN	10mm (3/8")	24	84
34KATF13SPN	13mm (1/2")	24	84
Tech Sheet 524			

Plugs



Male Thread, BSPT

3310	Thread	Hex Size mm	Length mm
34SFAK13SXN	1/4"	17	46
34SFAK17SXN	3/8"	19	46
34SFAK21SXN	1/2"	22	52
Tech Sheet 524			



Female Thread, BSPP

3310	Thread	Hex Size mm	Length mm
34SFIW17SXN	3/8"	19	40
34SFIW21SXN	1/2"	24	44
Tech Sheet 524			



Hose Tail

3310	To Suit Hose ID	Length mm
34SFTF10SXN	10mm (3/8")	55
34SFTF13SXN	13mm (1/2")	55
34SFTF16SXN	16mm (5/8")	55
Tech Sheet 524		

Other materials, seals and finishes available on request, please contact our technical department for further details.

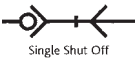
SERIES 40 QUICK COUPLING PARKER PROFILE LOW PRESSURE



Working Temperature:
-20°C to +100°C
Standard seal NBR



Maximum Static Working Pressure:
PB 35 bar (500 PSI)



Single Shut Off

Material:
Brass, nitrile seal



Profile

Couplings



Female Thread, BSPP

4010	Thread	Hex Size mm	Length mm
40KAIW17MPX	3/8"	27	46
40KAIW21MPX	1/2"	27	46
Tech Sheet 30002			

Plugs



Male Thread, BSPT

4010	Thread	Hex Size mm	Length mm
40SFAK17SXN	3/8"	17	40
Tech Sheet 30002			



Female Thread, BSPP

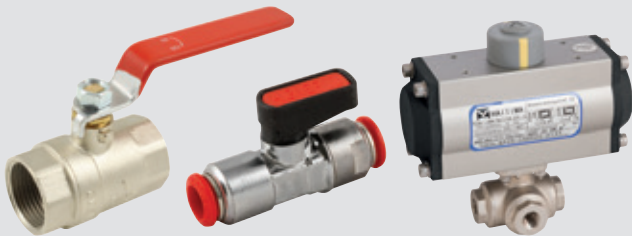
4010	Thread	Hex Size mm	Length mm
40SFIW17SXN	3/8"	19	35
40SFIW21SXN	1/2"	24	39
Tech Sheet 30002			



Hose Tail


4010	To Suit Hose ID mm	Length mm
40SFTF08SXN	8	51
40SFTF10SXN	10	51
40SFTF13SXN	13	51
Tech Sheet 30002		

For **Valves & Actuation**
see **Section 7** page **919**



SERIES 41 QUICK COUPLING PARKER PROFILE LOW PRESSURE FLUID & PNEUMATIC



 **Working Temperature:**
-20°C to +100°C
Standard seal NBR

 **Maximum Static Working Pressure:**
PB 35 bar (500 PSI)



Straight Through

Interchangeability:
Rectus 27

Material:
Brass nickel plated
Application:
Straight through coupling designed for water.
High flow water applications



Profile

Couplings



Male Thread, BSPP

4110	Thread	Length mm
41KFAW21MPN	1/2"	31

Tech Sheet 525



Female Thread, BSPP & Metric

4110	Thread	Hex Size mm	Length mm
41KFIW21MPN	1/2"	24	32

Tech Sheet 525



Hose Tail

4110	To Suit Hose ID	Length mm
41KFTF13MPN	13mm (1/2")	48
41KFTF16MPN	16mm (5/8")	48
41KFTF19MPN	19mm (3/4")	48

Tech Sheet 525

Plugs



Male Thread, BSPP

4110	Thread	Hex Size mm	Length mm
41SFAW21MXN	1/2"	24	40
41SFAW26MXN	3/4"	32	45

Tech Sheet 525



Female Thread, BSPP

4110	Thread	Hex Size mm	Length mm
41SFIW21MXN	1/2"	24	37
41SFIW26MXN	3/4"	32	42

Tech Sheet 525



Hose Tail

4110	To Suit Hose ID	Length mm
41SFTF10MXN	10mm (3/8")	48
41SFTF13MXN	13mm (1/2")	48
41SFTF16MXN	16mm (5/8")	48
41SFTF19MXN	19mm (3/4")	48

Tech Sheet 525

Other materials, seals and finishes available on request, please contact our technical department for further details.

SERIES 45 QUICK COUPLING PARKER PROFILE ISO BAR



Working Temperature:
-20°C to +100°C
Standard seal NBR



Maximum Static Working Pressure:
PB 15 bar



Interchangeability:
Hanson, Parker

Material:
Steel nickel plated
Application:
Straight through coupling, maximum flow, high pressure water and steam washers.



Profile

Couplings



Male Thread, BSPP, Viton Seals

4510	Thread	Hex Size mm	Length mm
45KFIW17MVX	3/8"	24	37
Tech Sheet 10282			

Plugs



Male Thread, BSPP, Steel Nickel Plated

4510	Thread	Hex Size mm	Length mm
45SFAW17SXN	3/8"	22	40
Tech Sheet 10282			



Female Thread, BSPP, Steel Nickel Plated

4510	Thread	Hex Size mm	Length mm
45SFIW17SXN	3/8"	22	42
Tech Sheet 10282			



For **Pneumatic Valves & Accessories**
see page **565**



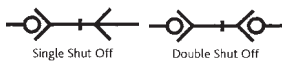
Other materials, seals and finishes available on request, please contact our technical department for further details.

SERIES 48 QUICK COUPLING PARKER PROFILE THERMOPLASTIC



Working Temperature:
RectuPom -20°C to +80°C NBR
RectuChem -20°C to +120°C NBR

Working Pressure @ +20°C:
RectuPom 0-10 bar
RectuChem 0-8 bar
RectuChem+ 1-8 bar



Interchangeability:
Rectus design

Material:
RectuPom – thermoplastic POM Black
RectuChem – thermoplastic PVDF White
Application:
Suitable for liquids, gases, drinking water, laboratories, medical technology and food areas.



Profile

Couplings



Male Thread, BSPP, RectuPom

0194	Thread	Hex Size mm	Length mm
48KBAW17DPX	3/8"	21	67
48KBAW21DPX	1/2"	21	74

Tech Sheet 10283



Female Thread, BSPP, RectuPom

0194	Thread	Hex Size mm	Length mm
48KBIW13DPX	1/4"	21	64
48KBIW17DPX	3/8"	21	64

Tech Sheet 10283



Hose Tail, RectuPom

0194	To Suit Hose ID mm	Hex Size mm	Length mm
48KBTf06DPX	6	21	81
48KBTf09DPX	9	21	81
48KBTf13DPX	13	21	84

Tech Sheet 10283



Male Thread, BSPP, RectuChem

0194	Thread	Hex Size mm	Length mm
48KBAW13FVX	1/4"	21	71
48KBAW17FVX	3/8"	21	67

Tech Sheet 10283



Female Thread, BSPP, RectuChem

0194	Thread	Hex Size mm	Length mm
48KBIW21FVX	1/2"	21	75

Tech Sheet 10283



Hose Tail, RectuChem

0194	To Suit Hose ID mm	Hex Size mm	Length mm
48KBTf06FVX	6	21	81
48KBTf13FVX	13	21	84

Tech Sheet 10283

Other materials, seals and finishes available on request, please contact our technical department for further details.

SERIES 48 QUICK COUPLING PARKER PROFILE THERMOPLASTIC



Plugs



Male Thread, BSPP, RectuPom

0194	Thread	Hex Size mm	Length mm
48SFAW13DXX	1/4"	17	39
Tech Sheet 10283			



Male Thread, BSPP, RectuChem

0194	Thread	Hex Size mm	Length mm
48SFAW13FXX	1/4"	17	39
48SFAW17FXX	3/8"	21	39
Tech Sheet 10283			



Female Thread, BSPP, RectuPom

0194	Thread	Hex Size mm	Length mm
48SFIW13DXX	1/4"	17	38.5
48SFIW17DXX	3/8"	21	35.5
Tech Sheet 10283			



Hose Tail, RectuPom

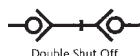
0194	To Suit Hose ID mm	Length mm
48SFTF13DXX	13	65.5
Tech Sheet 10283		



Hose Tail, RectuChem

0194	To Suit Hose ID mm	Length mm
48SFTF09FXX	9	65.5
Tech Sheet 10283		

Plugs (with Valve)



Female Thread, BSPP, RectuPom

0194	Thread	Hex Size mm	Length mm
48SBIW17DPX	3/8"	21	48
Tech Sheet 10283			



Female Thread, BSPP, RectuChem

0194	Thread	Hex Size mm	Length mm
48SBIW21FVX	1/2"	21	59
Tech Sheet 10283			



Hose Tail, RectuPom

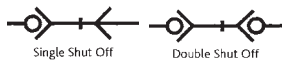
0194	To Suit Hose ID mm	Hex Size mm	Length mm
48SBTF06DPX	6	21	65.5
48SBTF09DPX	9	21	65.5
Tech Sheet 10283			

SERIES 51 QUICK COUPLING GERMAN INDUSTRIAL PROFILE



Working Temperature:
-20°C to +100°C
Standard seal NBR

Maximum Static Working Pressure:
PB 50 bar (725 PSI)



Interchangeability:
Rectus design

Material:
Steel nickel plated
Application:
Robust steel coupling for compressed air.
Pneumatic fluid handling



Profile

Couplings



Female Thread, BSPP

0194	Thread	Hex Size mm	Length mm
51KBIW13SPN	1/4"	22	61
51KBIW17SPN	3/8"	22	61
Tech Sheet 2099			

Plugs



Male Thread, BSPP

0194	Thread	Hex Size mm	Length mm
51SFAW13SXN	1/4"	17	35
Tech Sheet 2099			



Female Thread, BSPP

0194	Thread	Hex Size mm	Length mm
51SFIW13SXN	1/4"	17	34
51SFIW17SXN	3/8"	19	34
Tech Sheet 2099			



stainless
steel

For **Angle Seat Valves**
see page **1051**



Other materials, seals and finishes available on request, please contact our technical department for further details.

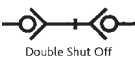
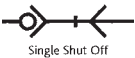
SERIES 52 QUICK COUPLING GERMAN INDUSTRIAL PROFILE



Working Temperature:
-20°C to +100°C
Standard seal NBR



Maximum Static Working Pressure:
PB 50 bar (725 PSI)



Interchangeability:
Rectus design

Material:
Steel nickel plated, NBR seal.
Application:
Robust steel coupling for compressed air.
Pneumatic fluid handling



Profile

Couplings



Male Thread, BSPP

0194	Thread	Hex Size mm	Length mm
52KBAW13SPN	1/4"	22	62
52KBAW17SPN	3/8"	22	62
52KBAW21SPN	1/2"	22	65
Tech Sheet 2100			



Female Thread, BSPP

0194	Thread	Hex Size mm	Length mm
52KBIW13SPN	1/4"	22	62
52KBIW17SPN	3/8"	22	60
52KBIW21SPN	1/2"	22	65
Tech Sheet 2100			



Hose Tail

0194	To Suit Hose ID mm	Hex Size mm	Length mm
52KBTf11SPN	11	21	80
Tech Sheet 2100			

Plugs



Male Thread, BSPP

0194	Thread	Hex Size mm	Length mm
52SFAW17SXN	3/8"	19	35
Tech Sheet 2100			



Male Thread, BSPP

0194	Thread	Hex Size mm	Length mm
52SBAW13SPN	1/4"	22	48
52SBAW17SPN	3/8"	22	48
52SBAW21SPN	1/2"	22	48
Tech Sheet 2100			



Hose Tail

0194	To Suit Hose ID mm	Length mm
52SFTf06SXN	6	46
Tech Sheet 2100		

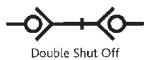
Other materials, seals and finishes available on request, please contact our technical department for further details.

SERIES 57 QUICK COUPLING GERMAN INDUSTRIAL PROFILE



 **Working Temperature:**
-20°C to +100°C
Standard seal NBR

 **Maximum Static Working Pressure:**
PB 35 bar (500 PSI)



Double Shut Off

Interchangeability:
Rectus design

Material:
Brass nickel plated, NBR seal.
Application:
Robust steel coupling for compressed air.
Pneumatic fluid handling



Profile

ULTRA-FLO »

Couplings



Male Thread, BSPP

0194	Thread	Hex Size mm	Length mm
57KBAW26SPN	3/4"	34	100
57KBAW33SPN	1"	41	100
Tech Sheet 2101			



Female Thread, BSPP

0194	Thread	Hex Size mm	Length mm
57KBIW21SPN	1/2"	34	100
57KBIW26SPN	3/4"	34	100
57KBIW33SPN	1"	41	101
Tech Sheet 2101			



Hose Tail

0194	To Suit Hose ID mm	Hex Size mm	Length mm
57KBTf19SPN	19	34	122
Tech Sheet 2101			

Plugs



Male Thread, BSPP

0194	Thread	Hex Size mm	Length mm
57SBAW21SPN	1/2"	27	83
57SBAW26SPN	3/4"	34	85
57SBAW33SPN	1"	41	85
Tech Sheet 2101			



Female Thread, BSPP

0194	Thread	Hex Size mm	Length mm
57SBIW21SPN	1/2"	27	85
57SBIW26SPN	3/4"	34	85
Tech Sheet 2101			

Other materials, seals and finishes available on request, please contact our technical department for further details.

SERIES 68 SCHRADER



Working Temperature:
-10°C to +80°C
Standard seal NBR

Maximum Static Working Pressure:
PB 17 bar (246 PSI)

Single Shut Off

Interchangeability:
Schrader heavy-duty

Material:
Steel nickel plated, NBR seal (standard series coupling).

Application:
General purpose pneumatic coupling



Profile

Couplings



Male Thread, BSPP

1710	Thread	Hex Size mm	Length mm
68KAAW17SPN	3/8"	30	66
68KAAW21SPN	1/2"	30	68
68KAAW26SPN	3/4"	30	68



Female Thread, BSPP

1710	Thread	Hex Size mm	Length mm
68KAIW13SPN	1/4"	30	74
68KAIW17SPN	3/8"	30	74
68KAIW21SPN	1/2"	30	68
68KAIW26SPN	3/4"	32	68



Hose Tail

1710	To Suit Hose ID	Hex Size mm	Length mm
68KATF10SPN	10mm (3/8")	30	81
68KATF13SPN	13mm (1/2")	30	81
68KATF19SPN	19mm (3/4")	30	81



For **Superior Rubber Alloy Air Hose & Assemblies**
see page **1410**



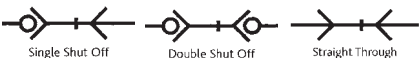
Other materials, seals and finishes available on request, please contact our technical department for further details.

SERIES 86 QUICK COUPLINGS INTERNATIONAL PROFILE MOULD COUPLING (MOLD)



 **Working Temperature:**
-15°C to +200°C
Standard seal FKM

 **Maximum Static Working Pressure:**
PB 15 bar (217 PSI)



Interchangeability:
D-M-E, Foster FJT,
Parker Mold Mate.

Material:
Brass, seals FKM standard, silicone available.

Application:
Brass coupling for connection of coolant lines to
moulds and dies.

Product Description:
Parker's Quick Coupling Series 86/87/88 were
especially developed for connecting coolant lines and
injection molds. The countersunk plugs can easily be
connected and disconnected because of the extended
sleeve. The angular connections prevent kinks from
forming in the hose.

This coupling series is available in single shut-off,
double shut-off, straight-through versions and is also
available with SAFE-LOCK™ technology. The shut-off
couplings (with valve) are equipped with nickel plated
sleeves for quick and accurate visual differentiation.

Markets: Industrial

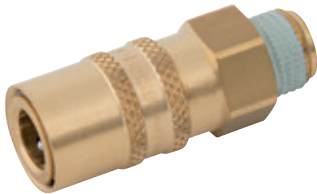
Features and Benefits:

- SAFE-LOCK™ technology reliably prevents accidental uncoupling of the system under pressure.
- Shut off couplings are equipped with nickel plated sleeve for quick and accurate visual differentiation.



Profile

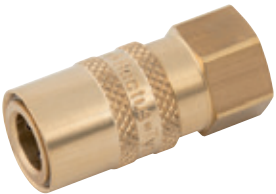
Couplings



Male Thread, BSPP, Straight Through

4610	Thread	Hex Size mm	Length mm
86KFAW13MVX	1/4"	15	43

Tech Sheet 527



Female Thread, BSPP, Straight Through

4610	Thread	Hex Size mm	Length mm
86KFIW10MVX	1/8"	15	39
86KFIW13MVX	1/4"	15	41

Tech Sheet 527



Straight Hose Tail, Straight

4610	To Suit Hose ID	Hex Size mm	Length mm
86KFTF06MVX	6mm (1/4")	15	56
86KFTF09MVX	9mm (3/8")	15	56

Tech Sheet 527

Male Thread, BSPP, Double Shut Off

4610	Thread	Hex Size mm	Length mm
86KBAW13MVX	1/4"	15	43

Tech Sheet 527

Female Thread, BSPP, Double Shut Off

4610	Thread	Hex Size mm	Length mm
86KBIW13MVX	1/4"	15	41

Tech Sheet 527

Straight Hose Tail, Double Shut Off

4610	To Suit Hose ID	Hex Size mm	Length mm
86KBTF06MVX	6mm (1/4")	15	56
86KBTF09MVX	9mm (3/8")	15	56

Tech Sheet 527



45° Hose Tail, Double Shut Off

4610	To Suit Hose ID	Hex Size mm	Length mm
86KBTH09MVX	9mm (3/8")	15	61

Tech Sheet 527



90° Hose Tail, Straight

4610	To Suit Hose ID	Hex Size mm	Length mm
86KFTR09MVX	9mm (3/8")	15	44

Tech Sheet 527

90° Hose Tail, Double Shut Off

4610	To Suit Hose ID	Hex Size mm	Length mm
86KBTR09MVX	9mm (3/8")	15	44

Tech Sheet 527

Other materials, seals and finishes available on request, please contact our technical department for further details.

SERIES 86 QUICK COUPLING INTERNATIONAL PROFILE

Straight Through Plugs



Male Thread, BSPT

4610	Thread	Hex Size mm	Length mm
86SFAK10MXX	1/8"	11	24
86SFAK13MXX	1/4"	14	28.5
86SFAK17MXX	3/8"	17	26.5
Tech Sheet 527			

Shut-off Plug



Male Thread, BSPT

4610	Thread	Hex Size mm	Length mm
86SBAK13MVX	1/4"	17	23.5
Tech Sheet 527			

Replacement Bodyseals



Viton & Silicone

4610
86-VITON
86-SILICONE
Tech Sheet 527



Snap-tite ISO's see pages 318-320

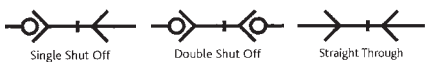


Other materials, seals and finishes available on request, please contact our technical department for further details.

SERIES 87 QUICK COUPLING INTERNATIONAL PROFILE MOULD COUPLINGS

 **Working Temperature:**
-15°C to +200°C
Standard seal FKM

 **Maximum Static Working Pressure:**
PB 15 bar (217 PSI)



Interchangeability:
D-M-E, Jiffy-Tite, Jiffy-Matic, Foster FJT,
Parker Mould Mate

Material:
Brass, viton or silicone seals

Application:
Brass coupling for connection of coolant lines to moulds and dies

Couplings



Straight Hose Tail, Straight

4610	To Suit Hose ID	Hex Size mm	Length mm
87KFTF09MVX	9mm (3/8")	19	71
87KFTF13MVX	13mm (1/2")	19	71
Tech Sheet 526			

Straight Hose Tail, Double Shut Off

4610	To Suit Hose ID	Hex Size mm	Length mm
87KBTF09MVX	9mm (3/8")	19	71
87KBTF13MVX	13mm (1/2")	19	71
Tech Sheet 526			



45° Hose Tail, Straight

4610	To Suit Hose ID	Hex Size mm	Length mm
87KFTH09MVX	9mm (3/8")	19	79
87KFTH13MVX	13mm (1/2")	19	79
Tech Sheet 526			

45° Hose Tail, Double Shut Off

4610	To Suit Hose ID	Hex Size mm	Length mm
87KBTH09MVX	9mm (3/8")	19	79
87KBTH13MVX	13mm (1/2")	19	79
Tech Sheet 526			



90° Hose Tail, Straight

4610	To Suit Hose ID	Hex Size mm	Length mm
87KFTR09MVX	9mm (3/8")	19	65
87KFTR13MVX	13mm (1/2")	19	65
Tech Sheet 526			



Profile

Straight Through Plugs



Male Thread, Brass, BSPT

4610	Thread	Hex Size mm	Length mm
87SFAK13MXX	1/4"	14	32
87SFAK17MXX	3/8"	17	32
87SFAK21MXX	1/2"	22	39
Tech Sheet 526			



Female Thread, Steel, Nickel Plated, BSPP

4610	Thread	Hex Size mm	Length mm
87SFIW13SXX	1/4"	19	37
87SFIW17SXX	3/8"	19	37
Tech Sheet 526			

Shut-off Plug



Male Thread, Brass, BSPT

4610	Thread	Hex Size mm	Length mm
87SBAK17MVX	3/8"	17	34
87SBAK21MVX	1/2"	22	39
Tech Sheet 526			

Replacement Bodyseals



Viton & Silicone

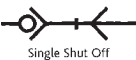
4610
87-VITON
87-SILICONE
Tech Sheet 526

SERIES 95 BREATHING AIR QUICK COUPLINGS



Working Temperature:
-20°C to +100°C
Standard seal NBR

Maximum Static Working Pressure:
PB 35 bar (500 PSI)



Flow Rate:
1700 L/min

Material:
Brass nickel plated, NBR seal (standard series coupling)
Application:
Single shut off quick connect coupling commonly used on portable breathing air kits and hose line trolley packs

ULTRA-FLO »»



Profile

Couplings



Male Thread, BSPT

9510	Thread	Hex Size mm	Length mm
95KSAK13BPN	1/4"	19	61
95KSAK17BPN	3/8"	19	61
95KSAK21BPN	1/2"	22	61
Tech Sheet 528			



Female Thread, BSPP

9510	Thread	Hex Size mm	Length mm
95KSIW13BPN	1/4"	19	56
95KSIW17BPN	3/8"	19	55
Tech Sheet 528			



Hose Tail

9510	To Suit Hose ID	Hex Size mm	Length mm
95KSTF08BPN	8mm (5/16")	19	74
95KSTF09BPN	9mm (3/8")	19	74
95KSTF13BPN	13mm (1/2")	19	74
Tech Sheet 528			

Plugs



Male Thread, BSPT

9510	Thread	Hex Size mm	Length mm
96SSAK13MXN	1/4"	14	38.5
96SSAK17MXN	3/8"	17	38.5
Tech Sheet 528			



Female Thread, BSPP

9510	Thread	Hex Size mm	Length mm
96SSIW13MXN	1/4"	17	33
96SSIW17MXN	3/8"	19	33
Tech Sheet 528			



Hose Tail

9510	To Suit Hose ID	Length mm
96SSTF06MXN	6mm (1/4")	48
96SSTF09MXN	9mm (3/8")	48
Tech Sheet 528		

Male Thread, BSPT, 316 Stainless Steel

stainless steel

9510	Thread	Hex Size mm	Length mm
96SSAK13EXX	1/4"	14	38.5
Tech Sheet 528			

Dust Protection



Caps & Plugs

9510	To Suit
SK23S	Coupling
SK12S	Plug
Tech Sheet 528	

Hose Tail, 316 Stainless Steel

stainless steel

9510	To Suit Hose ID	Length mm
96SSTF10EXX	10mm (3/8")	48
Tech Sheet 528		

SCHRADER COUPLINGS & PLUGS

Features:

- Twist-lock action
- Wide choice of adaptors
- Non-whip
- Rugged design

Application:

Twist-lock units are designed for single-handed connection and disconnection. A twist on the cap will release the adaptor and the air line will automatically reseal. When coupled, the check unit allows the adaptors to swivel, to eliminate kinking of the hose.



Working Temperature:
-10°C to +80°C



Working Pressure:
0 to 17 bar

Standard Duty Couplings



Male Thread, BSPT

4801	Thread	Length mm
9793D-12	1/4"	55
9792D-12	3/8"	55
Tech Sheet 68771		



Female Thread, BSPP

4801	Thread	Length mm
8952DL-12	1/4"	45
Tech Sheet 68771		

Heavy-duty Couplings



Female Thread, BSPP

4801	Thread	Length mm
1054EL-12	1/4"	58
1095EL-12	3/8"	58
1461EL-12	1/2"	58
1462EL-12	3/4"	63
Tech Sheet 68771		

Standard Duty Plugs



Male Thread, BSPT

4801	Thread	Length mm
8051B-11	1/8"	42
8050B-11	1/4"	44
Tech Sheet 68771		

Heavy-duty Plugs



Male Thread, BSPT

4801	Thread	Length mm
8624B-11	1/4"	48
9739-11	3/8"	48
8807-11	1/2"	54
Tech Sheet 68771		



Male Thread, BSPP

4801	Thread	Length mm
1462B-11	3/4"	55
Tech Sheet 68771		

Hose Tail



4801	To Suit Hose ID	Length mm
8787-11	6mm (1/4")	57
9750-11	8mm (5/16")	57
8788-11	10mm (3/8")	57
Tech Sheet 68771		

Female Thread, BSPP, Non-whip



4801	Thread	Length mm
9031	1/4"	55
Tech Sheet 68771		

Female Thread, BSPP



4801	Thread	Length mm
1261L-11	1/4"	43
1096B-11	3/8"	47
Tech Sheet 68771		

Hose Tail



4801	To Suit Hose ID	Length mm
1097-11	10mm (3/8")	71
1098-11	12mm (1/2")	71
Tech Sheet 68771		

Female Thread, BSPP, Non-whip



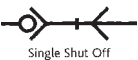
4801	Thread	Length mm
9042	3/8"	57.5
Tech Sheet 68771		

SERIES 1100 SCANDINAVIAN PROFILE



Working Temperature:
-20°C to +100°C
Standard seal NBR

Maximum Static Working Pressure:
30 bar



Material:
Coupling: Brass nickel plated
Plug: Steel zinc plated
Seals: NBR
Interchangeability:
Tema design
Application:

Robust design with small dimensions. Series 1100 is used mainly for applications in the area of compressed air and liquids. Optimally suited to smaller pneumatic systems and to compressed air tools with a consumption of up to 900 litres per minute. Coupling systems with two hand operation i.e. both hands are required when connect/disconnect.



Profile

Couplings



BSPP, Nitrile Seals, Single Shut Off

0073	Thread	Length mm
TE-1100 A	1/4" Male	38
TE-1100	1/8" Female	37
Tech Sheet 529		

Plugs



BSPP, Single Shut Off

0073	Thread	Length mm
TE-11410	1/8" Female	27
Tech Sheet 529		



Hose Tail, Single Shut Off

0073	To Suit Hose ID mm	Length mm
TE-11006	6	33
Tech Sheet 529		



For **Parker Rectus RectuChem Fittings**
see pages **347-349**



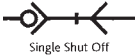
Other materials, seals and finishes available on request, please contact our technical department for further details.

SERIES 1300 SCANDINAVIAN PROFILE



 **Working Temperature:**
-20°C to +100°C
Standard seal NBR

 **Maximum Static Working Pressure:**
35 bar



Profile

Features:

- Single hand operation

Material:

Coupling: Brass nickel plated

Plug: Brass nickel plated

Seals: NBR

Rectus Series 31.

Application:

Series 1300 is used mainly for applications in the area of compressed air and liquids. Optimally suited to smaller to medium-sized pneumatic systems and to compressed air tools. The coupling series stands out for its compact design and high flow rates with the UltraFlo valve. Coupling body made of nitrocarburized steel.

Interchangeability:

Couplings



BSPP, Nitrile Seals NBR

0073	Thread	Length mm
TE-1300	1/4" Female	49
TE-1300 A	3/8" Male	49
TE-1300 B	3/8" Female	50
Tech Sheet 530		

BSPP, Valved Viton Seals

0073	Thread	Length mm
TE-1300 V	1/4" Female	49
Tech Sheet 530		

Dust Protection



Plug

0073	To Suit
TE-1325	Series 1300
Tech Sheet 530	

Plugs



BSPP

0073	Thread	Length mm
TE-13210	1/4" Male	38
TE-13410	1/4" Female	36
Tech Sheet 530		



Hose Tail

0073	To Suit Hose ID mm	Length mm
TE-13010	10	44
Tech Sheet 530		



For **JWL Air Boy® Thrust Blow Gun**
see page **1601**

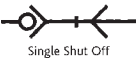
Other materials, seals and finishes available on request, please contact our technical department for further details.

SERIES 1800 SCANDINAVIAN PROFILE



Working Temperature:
-20°C to +100°C
Standard seal NBR

Maximum Static Working Pressure:
35 bar



Features:

- Single hand operation
- Particularly suited to medium-sized to large pneumatic systems and compressed air tools

Material:
Coupling: Brass nickel plated
Plug: Steel zinc plated
Seals: NBR

Interchangeability:
Rectus 32

Application:
Series 1800 is used mainly for applications in the area of compressed air and liquids. The coupling system stands out for its robust, compact design, high flow and high corrosion resistance due to the ultra high flow valve



Profile

Couplings



BSPP, Valved Nitrile Seal

0073	Thread	Length mm
TE-1800	3/8" Female	54
TE-1800 A	1/2" Male	54
TE-1800 B	1/2" Female	55
TE-1800 C	3/4" Female	57
Tech Sheet 531		

Plugs



BSPP

0073	Thread	Length mm
TE-18110	1/4" Male	39
TE-18210	3/8" Male	38
TE-18220	1/2" Male	40
TE-18405	1/4" Female	36
TE-18410	3/8" Female	36
TE-18420	1/2" Female	39
Tech Sheet 531		



Hose Tail

0073	To Suit Hose ID mm	Length mm
TE-18008	8	42
Tech Sheet 531		



For **Parker Legris Universal Blow Gun**
see page 1602



Other materials, seals and finishes available on request, please contact our technical department for further details.

C9000 ADVANCED QUICK ACTING COUPLERS – ISO 6150B PROFILE SAFETY



Couplings



Male, BSPP

1014	Thread
LE-9401U06 13	1/4"
LE-9401U06 17	3/8"
LE-9401U06 21	1/2"
Tech Sheet 1344	



Male, BSPT

1014	Thread
LE-9405U06 13	1/4"
LE-9405U06 17	3/8"
LE-9405U06 21	1/2"
Tech Sheet 1344	



Hose Tail

1014	To Suit Hose ID mm
LE-9421U06 06	6
LE-9421U06 08	8
LE-9421U06 10	10
Tech Sheet 1344	



Female, BSPP

1014	Thread
LE-9414U06 13	1/4"
LE-9414U06 17	3/8"
LE-9414U06 21	1/2"
Tech Sheet 1344	

Plugs



Male, BSPP

1014	Thread
LE-9087U06 13	1/4"
LE-9087U06 17	3/8"
LE-9087U06 21	1/2"
Tech Sheet 1344	



Female, BSPP

1014	Thread
LE-9086 23 13	1/4"
LE-9086 23 21	1/2"
Tech Sheet 1344	



Hose Tail

1014	To Suit Hose ID mm
LE-9094U06 06	6
LE-9094U06 08	8
LE-9094U06 10	10
Tech Sheet 1344	

C9000 ADVANCED QUICK ACTING COUPLERS - EURO PROFILE SAFETY



Couplings



Male, BSPP

1014	Thread
LE-9401E07 13	1/4"
LE-9401E07 17	3/8"
LE-9401E07 21	1/2"
Tech Sheet 1344	



Hose Tail

1014	Thread
LE-9421E07 10	10
LE-9421E07 13	13
Tech Sheet 1344	



Female, BSPP

1014	Thread
LE-9414E07 13	1/4"
LE-9414E07 17	3/8"
LE-9414E07 21	1/2"
Tech Sheet 1344	

Plugs



Male, BSPP

1014	Thread
LE-9087E07 17	3/8"
LE-9087E07 21	1/2"
Tech Sheet 1344	



Female, BSPP

1014	Thread
LE-9086 25 13	1/4"
LE-9086 25 17	3/8"
LE-9086 25 21	1/2"
Tech Sheet 1344	



Hose Tail

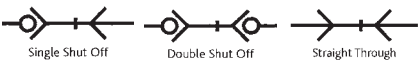
1014	To Suit Hose ID mm
LE-9094E07 08	8
LE-9094E07 10	10
LE-9094E07 13	13
Tech Sheet 1344	

SERIES 10/11 MOLDTITE



Working Temperature:
-15°C to +200°C
Standard seal FKM

Maximum Static Working Pressure:
PB 15 bar (217 PSI)
Safety factor of 4 to 1



Material:
Brass

Application:
Mold coupling



Profile

Couplings



Straight Hose Tail, 9mm Profile, with Valve

0194	To Suit Hose ID
2053-5613	9mm (3/8")



90° Hose Tail, 9mm Profile, Valved

0194	To Suit Hose ID
2053-5696	9mm (3/8")



Male Thread, BSPT, 9mm Profile

0194	Thread
2053-5746	1/8"

Straight Hose Tail, 13mm Profile, with Valve

0194	To Suit Hose ID
2053-5639	13mm (1/2")

90° Hose Tail, 13mm Profile, Valved

0194	To Suit Hose ID
2053-5712	13mm (1/2")

Male Thread, BSPT, 13mm Profile

0194	Thread
2053-5761	1/4"



Straight Hose Tail, 13mm Profile, Straight Through

0194	To Suit Hose ID
2053-5621	13mm (1/2")



45° Hose Tail, 13mm Profile, Non-valved

0194	To Suit Hose ID
2053-5662	13mm (1/2")



For Maintenance Sprays
see pages 1570-1577

Valved Shut-off Plug



Male Thread, BSPT, 9mm Profile


0194	Thread
2053-5787	1/4"

Male Thread, BSPT, 13mm Profile

0194	Thread
2053-5795	3/8"

Other materials, seals and finishes available on request, please contact our technical department for further details.

QUICK COUPLINGS FOR PLASTIC INJECTION MOULDING

 **Working Temperature:** -15°C to +110°C (when using identification collets 513 and 523)
Working Temperature: 0°C to +200°C (when using without identification collets 513 and 523)

 **Maximum Working Pressure:**
15 bar (1.5Mpa).

These Couplings are designed to be connected with cooling systems of plastic injection mouldings. They have a particular structure that assures reduced Size and allows coupling using a single hand.

Temperature and Pressures:
The working pressures and working temperatures depend on the type of tube used; therefore the values must be determined in accordance with the tubes features. The following values apply only to Aignep products.

- Parallel gas in conformity with ISO 228.
- Water, cooling water, oil.
- Flexible tubes in plastic and rubber.

410-510 DN8 Series



412 Straight Female Socket, BSPP

0220	Thread
412-1/4	1/4"
Tech Sheet 20602	



415 Straight Female Socket with Hose Tail

0220	To Suit Hose ID mm
415-08	8
415-10	10
415-12	12
Tech Sheet 20602	



416 135° Socket

0220	To Suit Hose ID mm
416-08	8
416-12	12
Tech Sheet 20602	



418 90° Female Socket

0220	To Suit Hose ID mm
418-10	10
418-12	12
Tech Sheet 20602	



511 Female Plug, BSPP

0220	Thread
511-18	1/8"
511-14	1/4"
511-38	3/8"
Tech Sheet 20602	



513 Collets to suit 511 Female Plugs

0220	Colour
513-RED	Red
513-BLUE	Blue
Tech Sheet 20602	

420-520 DN12 Series



422 Straight Female Socket, BSPP

0220	Thread
422-12	1/2"
Tech Sheet 20602	



425 Straight Female Socket with Hose Tail

0220	To Suit Hose ID mm
425-13	13
425-16	16
Tech Sheet 20602	



521 Female Plug, BSPP

0220	Thread
521-38	3/8"
521-12	1/2"
Tech Sheet 20602	



523 Collets, to suit 521 Female Plugs

0220	Colour
523-RED	Red
Tech Sheet 20602	

ACETAL RESIN QUICK RELEASE COUPLINGS



The special quick connector offers a fast and reliable push-to-connect mechanism. The outer sleeve locks the plug into the socket. When the plug is disconnected, the socket acts as a shut-off valve. Various plugs can be connected and used, suitable for hydraulic or pneumatic systems.

Temperature: 4 to 90°C **Working Pressure:** Up to 14 bar (200 psi) at 20°C

Part	Material
Body	Nylon 6-6
Internal parts	Acetal
Spring & ball	Stainless steel

Couplings



Female Thread, BSPT

0497	Thread
81000	1/4"

Plugs



Male Thread, BSPT

0497	Thread
81400	1/4"



Female Thread, BSPT

0497	Thread
81500	1/4"

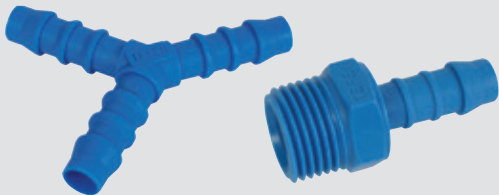


Hose Tail

0497	To Suit Hose ID mm
81606	6
81608	8
81610	10
81612	12



For **Tefen Nylon Hose Tails**
see page **1150**



AIR LINE COUPLINGS



Airflow Air Line Couplings (Fixed Application)

- Suitable for fixed applications where the coupling is used over a workbench and a single action is preferred
- Compatible with the Standard Air Line plugs

- Steel Construction – robust and hard wearing, ideal for use in the engineering/workshop environment
- Benchmark in the UK for quality and reliability

Interchangeability:
Rectus 19
Nominal Bore: 4.8mm

Working Temperature:
-40°C to +100°C

Maximum Working Pressure: 14 bar



Male Thread, BSPT

7001	Thread
AC21CM02	1/4"
AC21EM02	3/8"
AC21JM02	1/2"
Tech Sheet 20603	



Female Thread, BSPP

7001	Thread
AC21CF02	1/4"
AC21EF02	3/8"
AC21JF02	1/2"
Tech Sheet 20603	

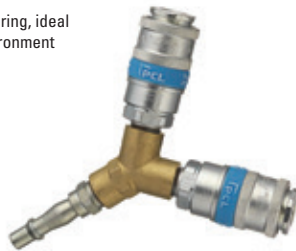


Hose Tail

7001	To Suit Hose ID
AC21R02	6mm (1/4")
AC21S02	8mm (5/16")
AC21T02	10mm (3/8")
Tech Sheet 20603	

Twin Coupling, Airflo

- Single action - designed for FIXED applications
- Compatible with Standard Adaptors
- Steel Construction - robust and hard-wearing, ideal for use in the engineering/workshop environment
- Positive locking mechanism
- British Standard Profil



'Y' 2 x Coupling, 1 x Plug

7001
AC6103
Tech Sheet 20606

Vertex Air Line Couplings (Trailing Hose Application)

- Double action mechanism
- Ideal where operators are using air tools or handheld inflators for trailing hose application

- Compatible with the Standard Air Line plugs
- Steel Construction – robust and hard wearing, ideal for use in the engineering/workshop environment

Interchangeability:
Rectus 19
Nominal Bore: 4.8mm

Working Temperature:
-40°C to +100°C

Maximum Working Pressure: 14 bar



Male Thread, BSPT

7001	Thread
AC91CM	1/4"
AC91EM	3/8"
AC91JM	1/2"
Tech Sheet 20603	



Female Thread, BSPP

7001	Thread
AC91CF	1/4"
AC91EF	3/8"
AC91JF	1/2"
Tech Sheet 20603	



Hose Tail

7001	Thread
AC91R	7mm (1/4")
AC91S	8mm (5/16")
AC91T	10mm (3/8")
Tech Sheet 20603	

AIR LINE COUPLINGS



Safeflow Safety Coupling

Compatible with the Standard Air Line plugs
Enhances workshop safety; prevents hose whip
Nominal Bore: 4.8mm

Maximum flow rate 43cfm at 100lbf/in²
Approvals: conforms to ISO 4414:1998 and EN 983:1996
Interchangeability: Rectus 19

Maximum Working Pressure:
200lbf/in² (14 bar)



Male Thread, BSPT

7001	Thread
SC21CM	1/4"
SC21EM	3/8"
SC21JM	1/2"
Tech Sheet 20605	

Female Thread, BSPP

7001	Thread
SC21CF	1/4"
SC21EF	3/8"
SC21JF	1/2"
Tech Sheet 20605	

Standard Air Line Plugs

- For use with all PCL Airflo , Vertex and Safeflow Coupling
- Steel Construction – robust and hard wearing, ideal for use in the engineering/workshop environment

Interchangeability:
Rectus 19
Nominal Bore: 4.8mm

Working Temperature:
-40°C to +100°C

Maximum Working Pressure: 14 bar



Male Thread, BSPT

7001	Thread
ACA2593	1/4"
ACA6909	3/8"
ACA6584	1/2"
Tech Sheet 20604	



Female Thread, BSPP

7001	Thread
ACA2746	1/4"
ACA6582	3/8"
ACA6583	1/2"
Tech Sheet 20604	



Hose Tail

7001	To Suit Hose ID
ACA1793	6mm (1/4")
ACA2487	8mm (5/16")
ACA2488	10mm (3/8")
Tech Sheet 20604	

Coupling Kit

Designed for the service engineer, or to keep in a workshop in case of a pneumatic air line failure, this small, compact kit contains all the parts you need to repair any standard air line failure.

Contents:

- 1 x AC91CM, AC91CF, HC6560, HC6892, HC6893, HC5656, HC1217, HC2479, HC6895, HC6896 and PTFE tape
- 2 x ACA2593, ACA2746, 000 and 00



Emergency Coupling Kit

7000
ACKIT01

AIR LINE COUPLINGS

60 Series Air Line Couplings

- Hardened shoulder helps prevent accidental disconnection
- Swivel feature prevents kinking of the hose
- Ideal for fixed and trailing hose applications in garage, tyre shop and industrial environments



Male Thread, BSPT

7000	Thread
AC4CM02	1/4"
AC4EM02	3/8"
AC4JM02	1/2"

Tech Sheet 20606

- ° Working Temperature: -40°C to +100°C
- Maximum Working Pressure: 14 bar
- Nominal Bore: 7.1mm



Female Thread, BSPT

7000	Thread
AC4CF02	1/4"
AC4EF02	3/8"
AC4JF02	1/2"

Tech Sheet 20606

60 Series Air Line Plugs



Male Thread, BSPT

7000	Thread
ACA2657	1/4"
ACA2661	3/8"

Tech Sheet 20606



Female Thread, BSPT

7000	Thread
ACA2653	1/4"
ACA2660	3/8"

Tech Sheet 20606



Hose Tail

7000	To Suit Hose ID
ACA2654	8mm (5/16")
ACA2658	10mm (3/8")
ACA2659	13mm (1/2")

Tech Sheet 20606

100 Series Air Line Couplings

- Hardened shoulder helps prevent accidental disconnection
- Swivel feature prevents kinking of the hose
- Specially designed valves and large aperture adaptors provide increased airflow for heavy duty application



Male Thread, BSPT

7000	Thread
AC5EM02	3/8"
AC5JM02	1/2"

Tech Sheet 20607

- Ideal for larger air tool applications in garage and tyre shop environments
- Nominal Bore: 10.3mm

- ° Working Temperature: -40°C to +100°C
- Maximum Working Pressure: 14 bar



Female Thread, BSPT

7000	Thread
AC5EF02	3/8"
AC5JF02	1/2"

Tech Sheet 20607

100 Series Air Line Plugs



Male Thread, BSPT

7000	Thread
ACA2999	3/8"
ACA3035	1/2"

Tech Sheet 20607



Female Thread, BSPT

7000	Thread
ACA2994	3/8"

Tech Sheet 20607



Hose Tail

7000	To Suit Hose ID
ACA3037	10mm (3/8")
ACA3036	13mm (1/2")

Tech Sheet 20607

AIR LINE COUPLINGS



Mini Couplings

- Small-bore couplings has proved popular in the robotics, medical, instrumentation and automation industries
- Lightweight and compact design
- Brass chrome plated

Nominal Bore: 5.0mm
Flow rate @ 6 bar (0.5 bar P.D.)
560 L/min

Interchangeability:
Camozzi Mini, Legris 21, Norgren 233,
Rectus 21 and Schrader Mini

Working Temperature:
-20°C to +80°C

Maximum Working Pressure:
35 bar (508 psi)



Male Thread, BSPP

7000	Thread
AC11AM	1/8"
AC11CM	1/4"

Tech Sheet 10662



Female Thread, BSPP

7000	Thread
AC11AF	1/8"
AC11CF	1/4"

Tech Sheet 10662

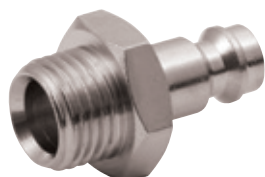


Hose Tail

7000	To Suit Hose ID
AC1106	6mm (1/4")
AC1109	9mm

Tech Sheet 10662

Mini Plugs



Male Thread, BSPP

7000	Thread
AA11AM	1/8"
AA11CM	1/4"

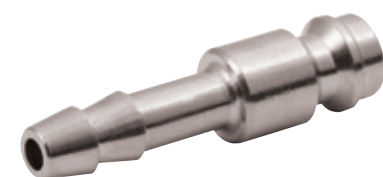
Tech Sheet 10662



Female Thread, BSPP

7000	Thread
AA11AF	1/8"
AA11CF	1/4"

Tech Sheet 10662



Hose Tail

7000	To Suit Hose ID
AA1106	6mm (1/4")
AA1109	9mm

Tech Sheet 10662



For **PCL Ergo Extreme Blow Guns**
see page 1605



AIR LINE COUPLINGS

XF-Euro Couplings

- High flow rate of 130 cfm @ 100 ps
- Hardened steel construction with corrosive resistant finis
- Steel shoulder helps prevent accidental disconnection
- Enhances tool efficienc
- Compatible with XF-Euro profile adaptor

Nominal Bore: 7.4 mm
Flow rate @ 6 bar (0.5 bar P.D.)
2200 L/min

Interchangeability:
Legris 25/26, Norgen 234/238, Rectus 25/26
and Schrader InterCheck 35

Working Temperature:
-40°C to +100°C

Maximum Working Pressure:
35 bar (508 psi)



Male Thread, BSPT

7000	Thread
AC71CM	1/4"
AC71EM	3/8"
AC71JM	1/2"

Tech Sheet 10663



Female Thread, BSPP

7000	Thread
AC71CF	1/4"
AC71EF	3/8"
AC71JF	1/2"

Tech Sheet 10663



Hose Tail

7000	To Suit Hose ID
AC7106	6mm (1/4")
AC7108	8mm (5/16")
AC7109	9mm
AC7110	10mm (3/8")
AC7113	13mm (1/2")

Tech Sheet 10663

XF-Euro Safety Couplings

Maximum Working Pressure:
16 bar

Nominal Bore: 7.4mm
Flow Rate @ 6 bar (0.5 Bar P.D.) 1750 l/min

Designed to conform with compressed air Health
and Safety Guide HS(G)39 and ISO 4414:2010



Male Thread, BSPT

7000	Thread
AS71CM	1/4"
AS71EM	3/8"
AS71JM	1/2"

Tech Sheet 10664



Female Thread, BSPP

7000	Thread
AS71CF	1/4"
AS71EF	3/8"
AS71JF	1/2"

Tech Sheet 10664

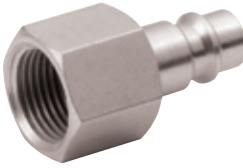
XF-Euro Plugs



Male Thread, BSPT

7000	Thread
AA7101	1/8"
AA7102	1/4"
AA7103	3/8"
AA7104	1/2"

Tech Sheet 10663



Female Thread, BSPP

7000	Thread
AA7105	1/8"
AA7106	1/4"
AA7107	3/8"
AA7108	1/2"

Tech Sheet 10663



Hose Tail

7000	To Suit Hose ID
AA7109	4mm
AA7110	6mm (1/4")
AA7111	8mm (5/16")
AA7114	9mm
AA7112	10mm (3/8")
AA7113	13mm (1/2")

Tech Sheet 10663

AIR LINE COUPLINGS



PF Couplings

- Competitive alternative to Schrader Couplings and Adaptors
- Steel Construction with corrosive resistant finish for longer life
- Superior flow characteristics

Nominal Bore: 5.0mm
Flow rate @ 6 bar (0.5 bar P.D.)
2200 L/min

Interchangeability:
Rectus 17 and Schrader Standard

Working Temperature:
-20°C to +80°C

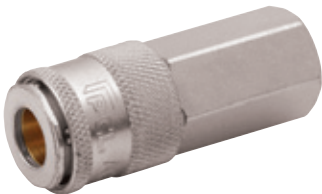
Maximum Working Pressure:
35 bar (508 psi)



Male Thread, BSPT

7000	Thread
AC77CM	1/4"
AC77EM	3/8"
AC77JM	1/2"

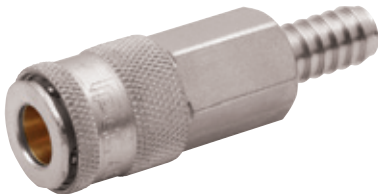
Tech Sheet 10665



Female Thread, BSPP

7000	Thread
AC77CF	1/4"
AC77EF	3/8"
AC77JF	1/2"

Tech Sheet 10665

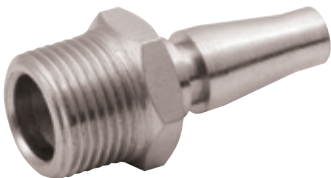


Hose Tail

7000	To Suit Hose ID
AC7706	6mm (1/4")
AC7708	8mm (5/16")
AC7710	10mm (3/8")
AC7713	13mm (1/2")

Tech Sheet 10665

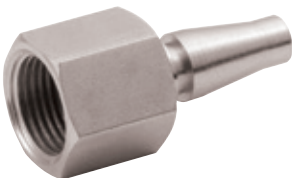
PF Plugs



Male Thread, BSPT

7000	Thread
AA7702	1/4"
AA7703	3/8"

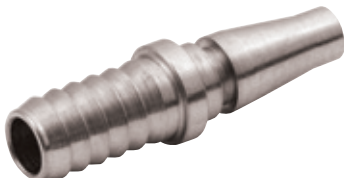
Tech Sheet 10665



Female Thread, BSPP

7000	Thread
AA7706	1/4"
AA7707	3/8"

Tech Sheet 10665



Hose Tail

7000	To Suit Hose ID
AA7710	6mm (1/4")
AA7711	8mm (5/16")
AA7712	10mm (3/8")

Tech Sheet 10665



PCL Couplings & Adaptors

The UK benchmark for quality and reliability

AIR LINE COUPLINGS

ISO B12 Couplings

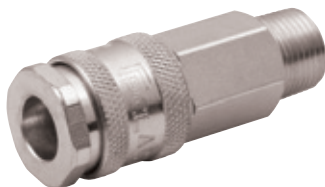
- Commonly used in Scandinavian markets, where this adaptor profile is required
- Steel Construction with corrosive resistant finish for longer life
- Steel shoulder helps prevent accidental disconnection

Nominal Bore: 5.5mm
Flow rate @ 6 bar (0.5 bar P.D.)
1100 L/min

Interchangeability:
Rectus 23/24, Hanson 3000
and Legris 24

Working Temperature:
-40°C to +100°C

Maximum Working Pressure:
35 bar (508 psi)



Male Thread, BSPT

7000	Thread
AC75CM	1/4"
AC75EM	3/8"
AC75JM	1/2"

Tech Sheet 10667



Female Thread, BSPP

7000	Thread
AC75CF	1/4"
AC75EF	3/8"
AC75JF	1/2"

Tech Sheet 10667

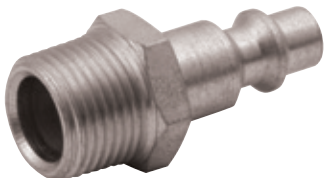


Hose Tail

7000	To Suit Hose ID
AC7506	6mm (1/4")
AC7508	8mm (5/16")
AC7510	10mm (3/8")
AC7513	13mm (1/2")

Tech Sheet 10667

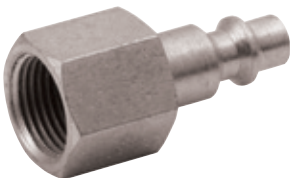
ISO B12 Plugs



Male Thread, BSPT

7000	Thread
AA7502	1/4"
AA7503	3/8"
AA7504	1/2"

Tech Sheet 10667



Female Thread, BSPP

7000	Thread
AA7506	1/4"
AA7507	3/8"

Tech Sheet 10667



Hose Tail

7000	To Suit Hose ID
AA7510	6mm (1/4")
AA7512	10mm (3/8")
AA7513	13mm (1/2")

Tech Sheet 10667

HAND PROTECTION

A newly expanded range of hand protection products caters for all work and safety needs. Only the best materials and manufacturing methods are used in the production of this extensive and highly specialised range.

For **Portwest Hand Protection**
see page **1756**



AIR LINE COUPLINGS



"A" Style Couplings

- Commonly used in American and most African markets where this specific profile of adaptor is required
- Steel Construction with corrosive resistant finish for longer life

Nominal Bore: 5.5mm
Flow rate @ 6 bar (0.5 bar P.D.)
650 L/min

Interchangeability:
ARO 210, JWL 522/532, Rectus 14/22
and Schrader Euro

Working Temperature:
-40°C to +100°C

Maximum Working Pressure:
14 bar



Male Thread, BSPT

7000	Thread
AC61CM	1/4"
AC61EM	3/8"
AC61JM	1/2"

Tech Sheet 10668



Female Thread, BSPP

7000	Thread
AC61CF	1/4"
AC61EF	3/8"
AC61JF	1/2"

Tech Sheet 10668

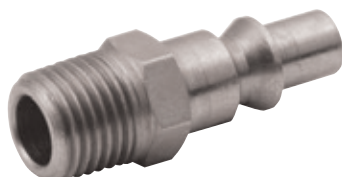


Hose Tail

7000	To Suit Hose ID
AC61R	6mm (1/4")
AC61S	8mm (5/16")
AC61T	10mm (3/8")

Tech Sheet 10668

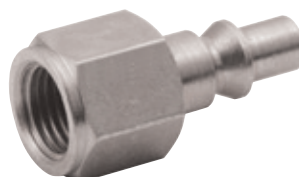
"A" Style Plugs



Male Thread, BSPT

7000	Thread
ACA6923	1/4"

Tech Sheet 10668



Female Thread, BSPP

7000	Thread
ACA6924	1/4"

Tech Sheet 10668



Hose Tail

7000	To Suit Hose ID
ACA6912	6mm (1/4")
ACA6922	8mm (5/16")
ACA6930	10mm (3/8")

Tech Sheet 10668



For FT PRO Flow Regulators
see page 1160



AIR LINE COUPLINGS

KF Couplings

- Ideal for portable air tool and industrial applications
- Excellent flow characteristic
- Commonly used in Asian and Oceania markets where this adaptor profile is required
- Steel Construction with corrosive resistant finish for longer life

Nominal Bore: 7.6mm

Flow rate @ 6 bar (0.5 bar P.D.)
2100 L/min

Interchangeability

Nitto Kohki 200 and Rectus 13

Working Temperature:
-40°C to +100°C

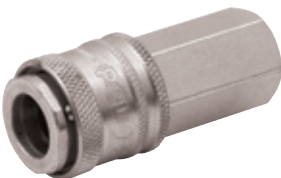
Maximum Working Pressure:
35 bar (508 psi)



Male Thread, BSPT

7000	Thread
AC78CM	1/4"
AC78EM	3/8"
AC78JM	1/2"

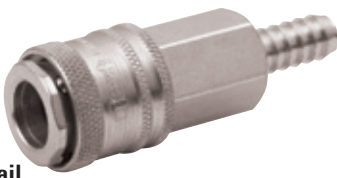
Tech Sheet 10669



Female Thread, BSPT

7000	Thread
AC78CF	1/4"
AC78EF	3/8"
AC78JF	1/2"

Tech Sheet 10669



Hose Tail

7000	To Suit Hose ID
AC7806	6mm (1/4")
AC7808	8mm (5/16")
AC7810	10mm (3/8")
AC7813	13mm (1/2")

Tech Sheet 10669

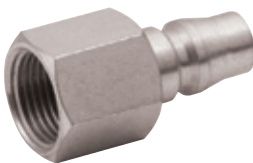
KF Plugs



Male Thread, BSPT

7000	Thread
AA7802	1/4"
AA7803	3/8"
AA7804	1/2"

Tech Sheet 10669



Female Thread, BSPT

7000	Thread
AA7806	1/4"
AA7807	3/8"
AA7808	1/2"

Tech Sheet 10669



Hose Tail

7000	To Suit Hose ID
AA7810	6mm (1/4")
AA7811	8mm (5/16")
AA7812	10mm (3/8")
AA7813	13mm (1/2")

Tech Sheet 10669

Multi-Fit Couplings

- Has the additional flexibility of accepting 3 key adaptor profiles; XF-Euro, "A" Style and ISO B12
- Steel Construction with corrosive resistant finish for longer life
- Offers enhanced tool efficiency

Nominal Bore: 5.0mm

Flow rate @ 6 bar (0.5 bar P.D.)
1800 L/min

Coupling can be used in conjunction with any of the following plugs ISO B12, XF, and Euro

Interchangeability:

Rectus 23/25/26, Hanson 3000 and Dynaquip DC 3

Working Temperature:
-20°C to +100°C

Maximum Working Pressure:
35 bar (508 psi)



Male Thread, BSPT

7000	Thread
AC73CM	1/4"
AC73EM	3/8"
AC73JM	1/2"

Tech Sheet 10666



Female Thread, BSPT

7000	Thread
AC73CF	1/4"
AC73EF	3/8"
AC73JF	1/2"

Tech Sheet 10666



Hose Tail

7000	To Suit Hose ID
AC7306	6mm (1/4")
AC7308	8mm (5/16")
AC7310	10mm (3/8")
AC7313	13mm (1/2")

Tech Sheet 10666

INSTANTAIR COUPLINGS



- Bayonet type quick acting couplings to maximum efficiency and prevent accidental uncoupling
- Zinc plated steel / Brass chrome plated

Nominal Bore: 5.6mm

Working Temperature:
-20°C to +80°C

Maximum Working Pressure:
17 bar

Steel Zinc Plated Instantair Couplings



Male Thread, BSPT

7000	Broomwade Reference	Thread
AC51CM	PT8825	1/4"
AC51EM	PT8827	3/8"
AC51JM	PT9095	1/2"
Tech Sheet 536		



Female Thread, BSPP

7000	Broomwade Reference	Thread
AC51CF	PT8823	1/4"
AC51EF	PT8800	3/8"
AC51JF	PT9096	1/2"
Tech Sheet 536		



Hose Tail

7000	Broomwade Reference	To Suit Hose ID
AC51R	PT8800/SU4	6mm (1/4")
AC51S	PT8800/SU5	8mm (5/16")
AC51T	PT8800/SU6	10mm (3/8")
Tech Sheet 536		

Steel Zinc Plated Instantair Adaptors



Male Thread, BSPP

7000	Broomwade Reference	Thread
AA5102	PT8808	1/4"
AA5103	PT8817	3/8"
Tech Sheet 536		



Female Thread, BSPP

7000	Broomwade Reference	Thread
AA5106	PT8806	1/4"
AA5107	PT8802	3/8"
Tech Sheet 536		



Hose Tail

7000	Broomwade Reference	To Suit Hose ID
AA5110	PT8802/SU4	6mm (1/4")
AA5111	PT8802/SU5	8mm (5/16")
AA5112	PT8802/SU6	10mm (3/8")
Tech Sheet 536		

Steel Zinc Plated Instantair Swivel Adaptors



Male Thread, BSPP

7000	Broomwade Reference	Thread
AA5302	PT8836	1/4"
AA5303	PT8838	3/8"
Tech Sheet 536		



Female Thread, BSPP

7000	Broomwade Reference	Thread
AA5306	PT8834	1/4"
AA5307	PT8804	3/8"
Tech Sheet 536		



Hose Tail

7000	Broomwade Reference	To Suit Hose ID
AA5310	PT8804/SU4	6mm (1/4")
AA5312	PT8804/SU6	10mm (3/8")
Tech Sheet 536		

INSTANTAIR COUPLINGS

Brass Chrome Plated Instantair Couplings



Male Thread, BSPP

7000	Broomwade Reference	Thread
AC52CM	PT8826	1/4"
Tech Sheet 536		



Female Thread, BSPP

7000	Broomwade Reference	Thread
AC52CF	PT8824	1/4"
Tech Sheet 536		

INSTANTAIR COUPLINGS

- 1/2" Instantair Couplings and Adaptors are not interchangeable with the Standard Instantair range
- Offer higher flow characteristics, they are ideal for heavy duty industrial applications

Nominal Bore: 8mm



Maximum Working Pressure:
17 bar

Steel Zinc Plated Instantair 1/2" Couplings



Male Thread, BSPP

7000	Broomwade Reference	Thread
AC59JM	PT8811	1/2"
Tech Sheet 536		



Female Thread, BSPP

7000	Broomwade Reference	Thread
AC59JF	PT8812	1/2"
Tech Sheet 536		



Hose Tail

7000	Broomwade Reference	To Suit Hose ID
AC59V	PT8813	13mm (1/2")
Tech Sheet 536		

Steel Zinc Plated Instantair 1/2" Swivel Adaptors



Male Thread, BSPP

7000	Broomwade Reference	Thred
AA5904	PT8820	1/2"
Tech Sheet 536		



Female Thread, BSPP

7000	Broomwade Reference	Thred
AA5908	PT8821	1/2"
Tech Sheet 536		



Hose Tail

7000	Broomwade Reference	To Suit Hose ID
AA5913	PT8819	13mm (1/2")
Tech Sheet 536		

OETIKER RANGES



19 Series SC Type P Couplings



Male Thread, BSPP

0550	Thread
20500434	1/4"
20500441	3/8"
20500442	1/2"



Female Thread, BSPP

0550	Thread
20500438	1/4"
20500439	3/8"
20500440	1/2"



Hose Tail

0550	To Suit Hose ID
20500443	1/4"
20500444	5/16"
20500445	3/8"

23 Series SC Type B1 Swing Couplings



Male Thread, BSPP

0551	Thread
20500314	1/4"
20500315	3/8"
20500316	1/2"



Female Thread, BSPP

0551	Thread
20500307	1/4"
20500308	3/8"
20500309	1/2"



Hose Tail

0551	To Suit Hose ID
20500320	1/4" (6mm)
20500321	5/16" (8mm)
20500322	3/8" (10mm)

25 & 26 Series SC Type C Swing Couplings



Male Thread, BSPP

0552	Thread
20500351	1/4"
20500352	3/8"
20500353	1/2"



Female Thread, BSPP

0552	Thread
20500345	1/4"
20500346	3/8"
20500347	1/2"



Hose Tail

0552	To Suit Hose ID
20500356	5/16"
20500357	3/8"
20500358	1/2"



For Fueling Equipment & Accessories
see page 1620





SERIES 'ST' STRAIGHT-THROUGH COUPLINGS

Working Temperature:
-40°C to +100°C

Working Pressure (PSI) Series 'ST'

Size	Steel Plug	Brass Plug	All Stainless
1/8"	2,600	2,500	4,200
1/4"	5,500	5,200	6,700
3/8"	3,500	2,700	5,500
1/2"	2,700	2,200	-
3/4"	1,700	1,700	-

Standard Seals: Nitrile
Only couplings and plugs of the same size, will interchange.
Interchangeability: Hansen ST

Couplings



Brass, Male Thread, NPTF

8110	Thread	Length mm
TB1S-10	1/8"	27
TB2S-15	1/4"	44
TB3S-20	3/8"	45
TB4S-25	1/2"	52
TB6S-30	3/4"	57

Tech Sheet 535

stainless
steel



Stainless Steel, Male Thread, NPTF

8110	Thread	Length mm
T2S-15-303	1/4"	44
T3S-20-303	3/8"	45

Tech Sheet 535



Brass, Female Thread, NPTF

8110	Thread	Length mm
TB1S-11	1/8"	27
TB2S-16	1/4"	39
TB3S-21	3/8"	41
TB4S-26	1/2"	48
TB6S-31	3/4"	52

Tech Sheet 535

stainless
steel



Stainless Steel, Female Thread, NPTF

8110	Thread	Length mm
T1S-11-303	1/8"	27
T2S-16-303	1/4"	39

Tech Sheet 535

Plugs



Brass, Male Thread, NPTF

8110	Thread
TB1T-10	1/8"
TB2T-15	1/4"
TB3T-20	3/8"
TB4T-25	1/2"
TB6T-30	3/4"

Tech Sheet 535



Steel, Male Thread, NPTF

8110	Thread
T1T-10	1/8"
T4T-25	1/2"

Tech Sheet 535

stainless
steel



Stainless Steel, Male Thread, NPTF

8110	Thread
T1T-10-303	1/8"
T2T-15-303	1/4"

Tech Sheet 535



Brass, Female Thread, NPTF

8110	Thread
TB1T-11	1/8"
TB2T-16	1/4"
TB3T-21	3/8"
TB4T-26	1/2"
TB6T-31	3/4"

Tech Sheet 535



Steel, Female Thread, NPTF

8110	Thread
T2T-16	1/4"
T3T-21	3/8"
T6T-31	3/4"

Tech Sheet 535

AIR BRAKE COMPONENTS

British Standard BS AU138B 2000, Air Line Couplings



Male, Emergency

0042	Thread
18-980/1	M22
Tech Sheet 20608	



Combined Female with Self Sealing Valve, Emergency

0042	Thread
18-979/1	M16
18-981/1	M22
Tech Sheet 20608	



Combined Male with Self Sealing Valve, Service

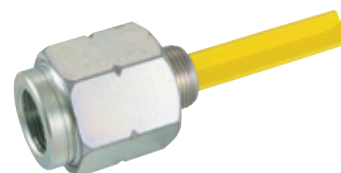
0042	Thread
18-978/1	M16
18-982/1	M22
Tech Sheet 20608	



Female with Lift Valve, Service

0042	Thread
18-983/1	M22
Tech Sheet 20608	

Quality Assured, Air Line Couplings



Self Sealing Valve

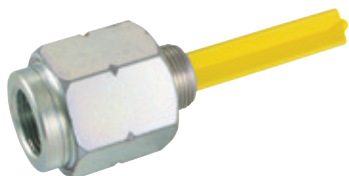
0042	Thread
18-868/1	M22 x 1.5
Tech Sheet 20610	



Operating Plug

0042	Thread
18-867/1	M22 x 1.5
Tech Sheet 20610	

Air Line Couplings



Self Sealing Valve

0042	Thread
18-868	M22 x 1.5
SSVC-12	1/2"
Tech Sheet 20609	



Operating Plug

0042	Thread
18-867	M22 x 1.5
OSC-12	1/2"
Tech Sheet 20609	

Emergency Couplings



Self Sealing Valve for C or CA Coupling

0042	Thread
SSV-12	1/2"
Tech Sheet 20611	